

Growth Factors

Cytokines • Soluble Receptors

Monoclonal Antibodies

Polyclonal Antibodies

ELISA

Service Options:

- Production of recombinant proteins in E.coli and insect cells
- Purification of recombinant proteins and antibodies
- Reagent services: special formulation
- Bulk service
- Functional assays for growth factors and cytokines



Release 04/2020

orders@reliatech.de

ReliaTech reliably yours

We are ISO 9001:2015 certified.

Your Partner in Life Science Research of
Angiogenesis and Lymphangiogenesis

20 years of experience

Get in touch:

ReliaTech GmbH

Lindener Str. 15
38300 Wolfenbüttel
Germany

Phone: +49 (0) 5331 8586 987
Fax: +49 (0) 5331 8586 989
E-Mail: orders@reliatech.de

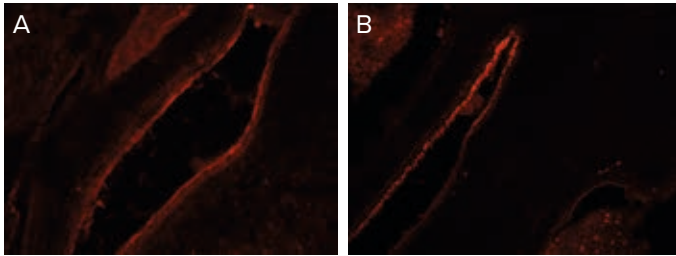


ReliaTech
Receptor Ligand Technologies GmbH

Anti-Human
CEACAM1
Antibodies

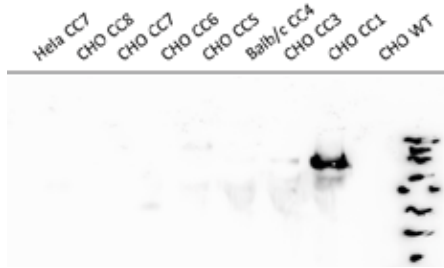
www.reliatech.de

Rabbit anti-human CEACAM1 [Cat# 102-PA100/102-PA102]



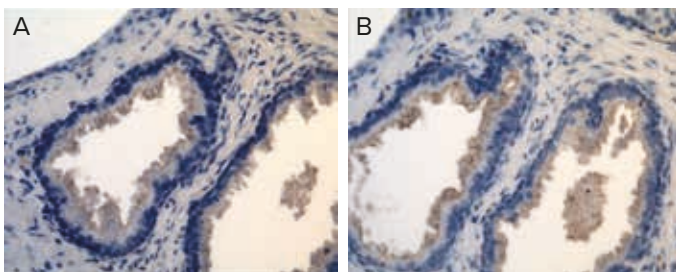
Immunohistochemistry (IHC) staining of CEACAM1 in human prostate tissue using ReliaTech's polyclonal rabbit anti-human CEACAM1 antibodies (A) [Cat# 102-PA100, #D1-4] and (B) [Cat# 102-PA102, #dN] with DAB staining.

Rabbit anti-human CEACAM1 [Cat# 102-PA102]



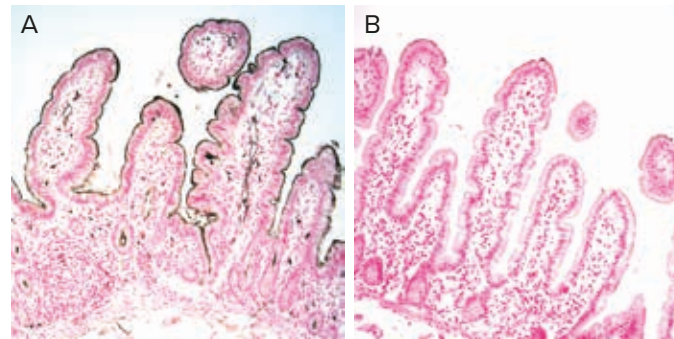
Western blot analysis of total lysate of different CEACAM proteins expressing cell lines with ReliaTech's polyclonal rabbit anti-human CEACAM1 antibody [Cat# 102-PA102, #dN]. There is a very slight cross-reactivity with human CEACAM5 visible. The same results were obtained with rabbit anti-human CEACAM1 antibody [Cat# 102-PA100, #D1-4] (data not shown).

Rabbit anti-human CEACAM1 [Cat# 102-PA100/102-PA102]



Immunohistochemistry (IHC) staining of CEACAM1 in human prostate tissue using ReliaTech's polyclonal rabbit anti-human CEACAM1 antibodies (A) [Cat# 102-PA100, #D1-4] and (B) [Cat# 102-PA102, #dN] with DAB staining.

Mouse anti-human CEACAM1 [Cat# 101-M181/101-M182]



Immunohistochemistry staining of CEACAM1 in human jejunum tissue using ReliaTech's monoclonal mouse anti-human CEACAM1 antibodies [(A) Cat# 101-M181, Clone #C5-1X and (B) Cat# 101-M182, Clone #B3-17]. CEACAM1 was detected in PFA-fixed paraffin-embedded sections of human jejunum tissue followed by staining with anti-mouse HRP-DAB and counterstaining with hematoxylin. The labeling showed a clear staining of CEACAM1.

Anti-human CEACAM1 antibodies by ReliaTech

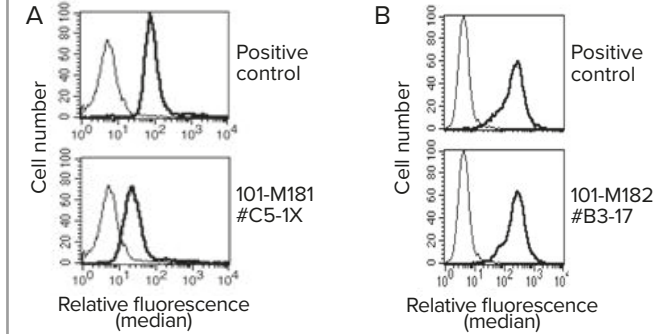
Cat#	Host	Antibody	Application
101-M181	Mouse	monoclonal clone (#C5-1X)	WB, IHC, E, IF, IP, FC
101-M182	Mouse	monoclonal clone (#B3-17)	WB, IHC, E, IF, IP, FC
102-PA100	Rabbit	polyclonal, Immunogen: rh sCEA-1 (D1-4)	E, WB, FC, IHC
102-PA102	Rabbit	polyclonal, Immunogen: rh sCEA-1 (ΔN)	E, WB, FC, IHC

The monoclonal mouse anti-human CEACAM1-antibodies are referenced in

1. E. Klaile et al., Front Microbiol. 2019; 10: 2703.
2. E. Klaile et al., mBio. 2017 Mar-Apr; 8(2): e02142-16.
3. D. M. Rovituso et al., Sci Rep. 2016; 6: 29847.
4. V. Khairnar et al., Nat Commun. 2015 Feb 18; 6: 6217.
5. M. Seifert et al., Proc Natl Acad Sci USA. 2015 Feb 10; 112(6): E546–E555.
6. B. B. Singer et al., PLoS One. 2014; 9(4): e94106.
7. H. T. Muturi et al., PLoS One. 2013; 8(9): e74654.
8. E. Klaile et al., Respir Res. 2013; 14(1): 85.

All experiments were performed by PD Dr. Bernhard Singer, Institute of Anatomy, Medical Faculty, University Duisburg-Essen, Germany.

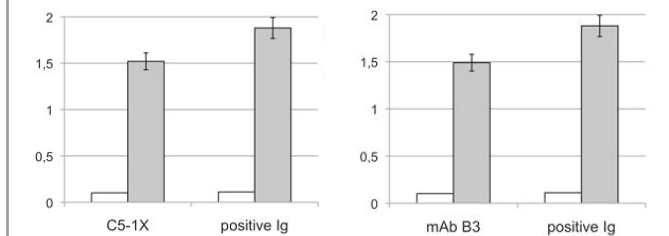
Mouse anti-human CEACAM1 [Cat# 101-M181/101-M182]



FACS analysis with stably transfected HeLa cells expressing human CEACAM1. 250.000 cells were incubated with 10µg/ml of primary mouse anti-human CEACAM1 clone #C5-1X [Cat# 101-M181] (A) and clone #B3-17 [Cat# 101-M182] (B), respectively. Binding was detected with a FITC-conjugated secondary antibody. Antibodies of both clones react with human CEACAM1, while clone #B3-17 stained much better.

There is no cross reactivity to human CEACAM3/-4/-5/-6/-7/-8 as well as rat CEACAM1 and mouse CEACAM1 and CEACAM2 (data not shown).

Mouse anti-human CEACAM1 [Cat# 101-M181/101-M182]



Sandwich ELISA: Solid phase was coated with 3 µg/ml anti-CEA (Dako) binding human CEACAM1. After washing, blocking and coating human CEACAM1 antigen, detecting antibody mAb clone #C5-1X [Cat# 101-M181] or mAb clone #B3-17 [Cat# 101-M182] with 10 µg/ml followed by HRP-coupled goat anti-mouse Ig was added. TMB was used for visualizing the binding measured by Tecan-ELISA reader at 450 nm.

White column: negative control, grey column: human CEACAM1

Note: In Sandwich ELISA both can also be used as catcher antibody.

Monoclonal mouse anti-human CEACAM1 antibody clone #C5-1X [Cat# 101-M181] as well as clone #B3-17 [Cat# 101-M182] interacts solely with human CEACAM1. Both monospecific antibodies show no cross-reactivity with other CEACAMs expressed in human or other species and both bind to the A1-B-Domain! While clone #C5-1X performed better in IHC and fluorescence microscopy, clone #B3-17 was clearly better in flow cytometry and ELISA.