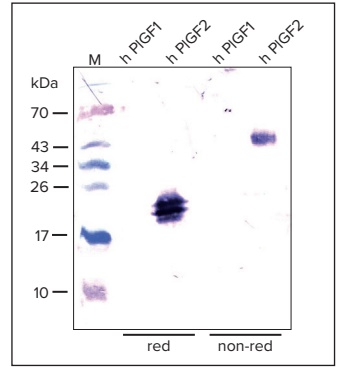


ANTI-HUMAN PLGF2 (#A6D1)

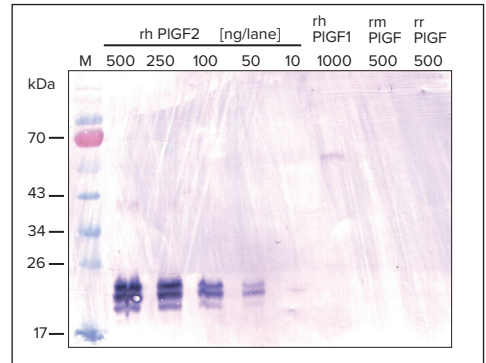
PRODUCT SPECIFICATIONS

- **Cat# 101-M65A**
- mouse monoclonal antibody
- clone #3B3/A9/A6/D1, IgG1
- Protein G purified
- 100 µg, lyophilized
- recognizes specifically human PIGF2
- no cross-reaction with human PIGF1, mouse PIGF and rat PIGF



APPLICATIONS

- Western Blot (red and non-red)
- IF
- ELISA



ALSO AVAILABLE

- PIGF, mouse anti-human, clone #178/G10 [Cat# 101-M67]
- PIGF, mouse anti-human, clone #331/H12 [Cat# 101-M69]

GET IN TOUCH:

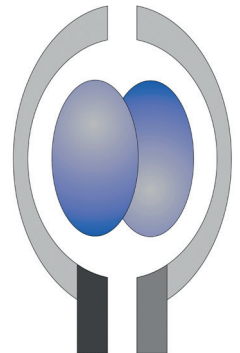
ReliaTech GmbH

Lindener Str. 15 • 38300 Wolfenbüttel • Germany

Phone: +49 (0) 5331 8586 987

Fax: +49 (0) 5331 8586 989

E-Mail: orders@reliatech.de



ANTI-HUMAN PLGF2

CAT# 101-M65A

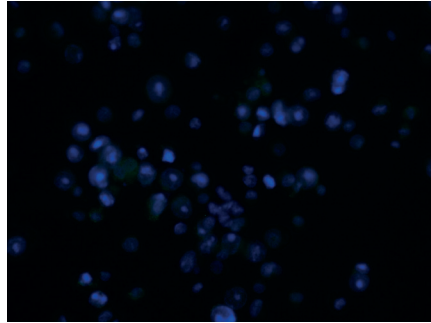
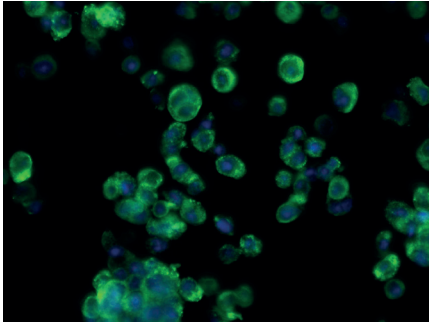


IMMUNOFLUORESCENCE STAINING

PIGF2

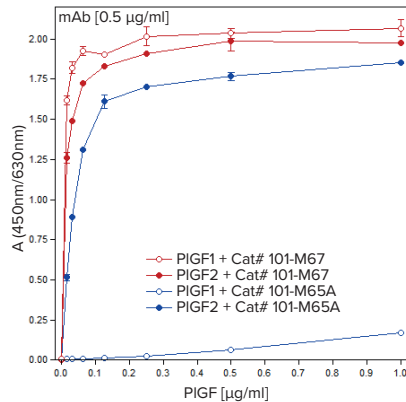
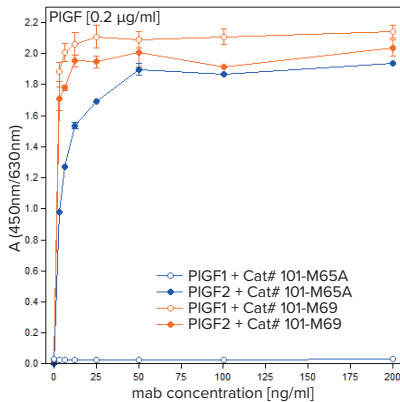
PIGF1

Cat# 101-M65A



Immunofluorescence staining of human PIGF1 and PIGF2 in Sf9 cells expressing either PIGF1 (right) or PIGF2 (left). Monoclonal mouse anti-human PIGF2 antibody [Cat# 101-M65A] recognizes only PIGF2 and monoclonal mouse anti-human PIGF antibody [Cat# 101-M67] recognizes both isoforms of PIGF (data not shown).

ELISA



ELISA with recombinant human PIGF1 and PIGF2 derived from insect cells. Both PIGF proteins were coated to a 96-well plate, the indicated anti-human PIGF antibodies were added. Detection was carried out with an anti-mouse Biotin-conjugated secondary antibody (Dianova).