



Anti-mouse TIE-2

20140702BB



FOR RESEARCH ONLY! NOT FOR HUMAN USE!

Cat.-no.:	103-PA111S
Size:	100 µg
Lot. No.:	According to product label
Country of origin:	Germany

Preparation: Produced from sera of rabbits pre-immunized with highly pure (>95%) recombinant mouse soluble TIE-2 (Ala23-Ala737) produced in insect cells.

Target Background

Synonyms:	Endothelial tyrosine kinase, Tyrosine kinase with Ig and EGF homology domains-2, CD202b
------------------	---

Recombinant mouse soluble TIE-2 was fused with a 6x His-tag at the C-terminus. The soluble receptor protein consists of the full extracellular domain (Ala23-Ala737). Mouse sTIE-2 monomer has a calculated molecular mass of approximately 79,86 kDa. As a result of glycosylation, the recombinant protein migrates as an approximately 95 kDa protein in SDS-PAGE under reducing conditions. TIE-1 (tyrosine kinase with Ig and EGF homology domains 1) and TIE-2/Tek comprise a receptor tyrosine kinase (RTK) subfamily with unique structural characteristics: two immunoglobulin-like domains flanking three epidermal growth factor (EGF)-like domains and followed by three fibronectin type III-like repeats in the extracellular region and a split tyrosine kinase domain in the cytoplasmic region.

These receptors are expressed primarily on endothelial and hematopoietic progenitor cells and play critical roles in angiogenesis, vasculogenesis and hematopoiesis defects.

References

- Partanen J and DJ Dumont (1999) Curr Top Microbiol Immunol 237:159.
- Takakura N et al, (1998) Immunity 9:677.
- Procopio W et al, (1999) J Biol Chem 274:30196.

Database References Antigen

Protein RefSeq:	NP_038718
Uniprot ID:	Q02858
mRNA RefSeq:	NM_013690

Product Specifications

Species reactivity	mouse
Clone/Ab feature	Rabbit IgG
Cross reactivity	(human)
Host	rabbit
Clonality	polyclonal
Purification	Protein A purified
Immunogen	Recombinant mouse sTIE-2 (RT Cat# S01-M44)
Formulation	lyophilized
Buffer	PBS

Stability: The lyophilized antibody is stable at room temperature for up to 1 month. The reconstituted antibody is stable for at least two weeks at 2-8°C. Frozen aliquots are stable for at least 6 months when stored at -20°C.

Reconstitution: Centrifuge vial prior to opening. Reconstitute in sterile water to a concentration of 0.1-1.0 mg/ml.



AVOID REPEATED FREEZE AND THAW CYCLES!

Applications

Western Blot:	Use at 2-5 µg/ml
FACS:	Use at 1-5 µg/ml

NOTE: OPTIMAL DILUTIONS SHOULD BE DETERMINED BY EACH LABORATORY FOR EACH APPLICATION!



Anti-mouse TIE-2

Handling/Applications

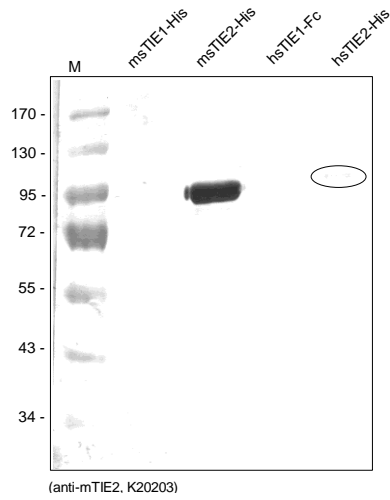


Figure 1. Western analysis of recombinant human and mouse sTIE-1 and sTIE-2 with a polyclonal antibody directed against mouse recombinant sTIE-2. There is a very weak cross reactivity with human sTIE-2 but not with human and mouse sTIE-1 visible.

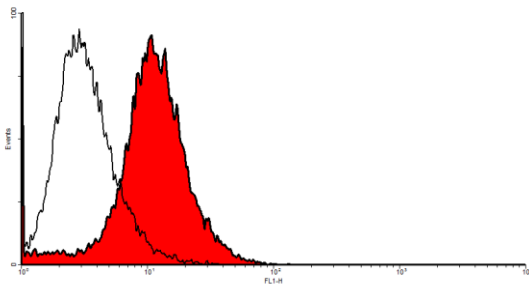


Figure 2. FACS analysis with primary mouse endothelial cells (SnoMec).