



Anti-mouse TIE-1



FOR RESEARCH ONLY! NOT FOR HUMAN USE!

Cat.-no.:	103-PA110
Size:	200 µg
Lot. No.:	According to product label
Country of origin:	Germany

Preparation: Produced from sera of rabbits pre-immunized with highly pure (>95%) recombinant mouse soluble TIE-1 (Ser22-Ala748) produced in insect cells.

Target Background

Synonyms:	Tyrosine protein kinase 1
------------------	---------------------------

Recombinant mouse soluble TIE-1 was fused with a 6x His-tag at the C-terminus. The soluble receptor protein consists of the full extracellular domain (Ser22-Ala748). Mouse sTIE-1 monomer has a calculated molecular mass of approximately 79,8 kDa. As a result of glycosylation, the recombinant protein migrates as an approximately 95 kDa protein in SDS-PAGE under reducing conditions. TIE-1 (tyrosine kinase with Ig and EGF homology domains 1) and TIE-2/Tek comprise a receptor tyrosine kinase (RTK) subfamily with unique structural characteristics: two immunoglobulin-like domains flanking three epidermal growth factor (EGF)-like domains and followed by three fibronectin type III-like repeats in the extracellular region and a split tyrosine kinase domain in the cytoplasmic region. These receptors are expressed primarily on endothelial and hematopoietic progenitor cells and play critical roles in angiogenesis, vasculogenesis and hematopoiesis defects.

References

1. Partanen J and DJ Dumont (1999) Curr Top Microbiol Immunol 237:159.
2. Takakura N et al, (1998) Immunity 9:677.
3. Procopio W et al, (1999) J Biol Chem 274:30196.
4. Sato et al., PNAS 90:9355, 1993
5. Gale et al., Gen Dev 13:1055, 1999

Database References Antigen

Protein RefSeq:	NP_035172
Uniprot ID:	Q06806
mRNA RefSeq:	NM_011587.2

Product Specifications

Species reactivity	mouse
Clone/Ab feature	Rabbit IgG
Cross reactivity	human
Host	rabbit
Clonality	polyclonal
Purification	Protein A purified
Immunogen	Recombinant mouse sTIE-1 (RT Cat# S01-M42)
Formulation	lyophilized
Buffer	PBS

Stability: The lyophilized antibody is stable at room temperature for up to 1 month. The reconstituted antibody is stable for at least two weeks at 2-8°C. Frozen aliquots are stable for at least 6 months when stored at -20°C.

Reconstitution: Centrifuge vial prior to opening. Reconstitute in sterile water to a concentration of 0.1-1.0 mg/ml.



AVOID REPEATED FREEZE AND THAW CYCLES!

Applications

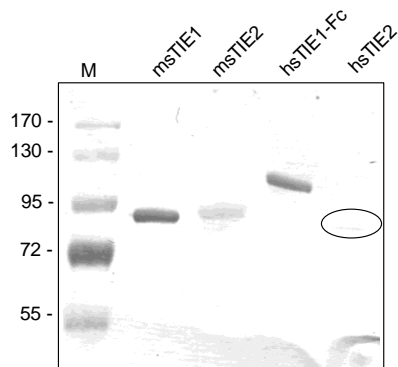
Western Blot: Use at 2-5 µg/ml

NOTE: OPTIMAL DILUTIONS SHOULD BE DETERMINED BY EACH LABORATORY FOR EACH APPLICATION!



Anti-mouse TIE-1

Handling/Applications



(anti-mouse TIE1; pab, K20104)

Figure 1. Western analysis of recombinant human and mouse sTIE-1 and sTIE-2 using a polyclonal antibody directed against mouse recombinant sTIE-1. There is a strong cross reactivity with human sTIE-1 but only a weak one for human and mouse sTIE-2 visible.