



Anti-mouse LIF

20140404BB



FOR RESEARCH ONLY! NOT FOR HUMAN USE!

Cat.-no.:	103-PA05
Size:	200 µg
Lot. No.:	According to product label
Country of origin:	Germany

Preparation: Produced from sera of rabbits immunized with highly pure recombinant mouse Leukemia Inhibitory Factor (LIF) [Ser24 – Phe203] produced in E. Coli.

Target Background

Synonyms:	Leukemia inhibitory factor, Differentiation-stimulating factor
------------------	--

Leukemia Inhibitory Factor also called LIF is a lymphoid factor that promotes long-term maintenance of embryonic stem cells by suppressing spontaneous differentiation. Leukemia Inhibitory Factor has several functions such as cholinergic neuron differentiation, control of stem cell pluripotency, bone & fat metabolism, mitogenesis of factor dependent cell lines & promotion of megakaryocyte production in vivo. Human and mouse LIF exhibit a 78% identity in its amino acid sequence. Human LIF is as active on human cells as is it is on mouse cells, though mouse LIF is about 1000 fold less active on human cells, than human LIF.

References

- Hirai H et al, Biochem J 438(1):11-23, 2011
- Jeannin P et al, Immunotherapy 3(4 Suppl):23-6, 2011
- Mathieu ME et al, Stem Cell Rev 8(1):1-15, 2012
- Broholm C and Pedersen BK, Exerc Immunol Rev 16:77-85, 2010
- Aghajanova L, Curr Opin Obstet Gynecol 22(3):213-9, 2010
- Paiva P et al, Cytokine Growth Factor Rev 20(4):319-28, 2009
- Chodorowska G et al, Ann Univ Mariae Curie Sklodowska Med 29(2):189-93, 2004
- Kondera-Anasz Z et al, Am J Reprod Immunol 52(2):97-105, 2004
- Aghajanova L, Ann N Y Acad Sci 1034:176-83, 2004

Database References Antigen

Protein RefSeq:	NP_032527.1
Uniprot ID:	P09056
mRNA RefSeq:	NM_008501.2

Product Specifications

Species reactivity	mouse
Clone/Ab feature	Rabbit IgG
Cross reactivity	ND
Host	rabbit
Clonality	polyclonal
Purification	Protein A purified
Immunogen	Recombinant mouse LIF (RT #M30-008)
Formulation	lyophilized
Buffer	PBS

Stability: The lyophilized antibody is stable at room temperature for up to 1 month. The reconstituted antibody is stable for at least two weeks at 2-8°C. Frozen aliquots are stable for at least 6 months when stored at -20°C.

Reconstitution: Centrifuge vial prior to opening. Reconstitute in sterile water to a concentration of 0.1-1.0 mg/ml.



AVOID REPEATED FREEZE AND THAW CYCLES!

Applications

Western Blot: Use 1-5 µg/ml

NOTE: OPTIMAL DILUTIONS SHOULD BE DETERMINED BY EACH LABORATORY FOR EACH APPLICATION!



Anti-mouse LIF

Handling/Applications

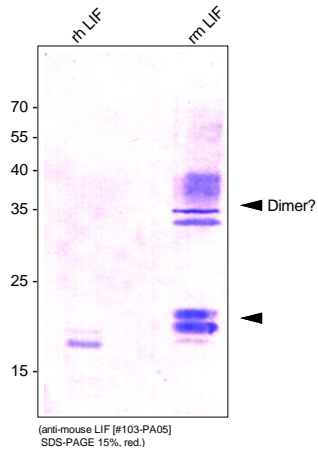


Figure 1: Western analysis of recombinant human / mouse Leukemia Inhibitory Factor (LIF) using a polyclonal antibody directed against a highly pure recombinant mouse LIF [Cat# M30-007]. There is a weak cross reactivity with the human LIF [Cat# 200-007] visible.