



20201117DS

Anti-human Prox-1

FOR RESEARCH ONLY! NOT FOR HUMAN USE!

Cat.-no.:	102-PA32
Size:	200 µg
Lot. No.:	According to product label
Country of origin:	Germany

Preparation: Produced from sera of rabbits pre-immunized with highly pure (>95%) recombinant human Prox-1 (Ala547-Glu737) from E. coli.

Target Background

Synonyms:	Prospero homeobox protein 1, PROX1
------------------	------------------------------------

Prox-1 is a homeobox gene and acts as a master switch for lymphatic endothelial phenotype. Expression of Prox-1 in blood endothelial cells induces expression of other lymphatic marker genes. Together with Podoplanin, Prox-1 can be used to reliably distinguish lymphatic vessels from blood vessels. Prox1 is expressed in CNS, eye, pancreas, liver and heart, and it is one of the most specific and reliable markers for lymphatic endothelial cells.

The highly conserved C-terminal part of the homeobox transcription factor Prox1 was produced in E. coli. It was not tested for activity and can be used as positive control e.g. in Western analysis.

References

1. Belecky et al., Invest Ophthalmol Vis Sci 38, 1293 (1997)
2. Glasgow, Tomarev, Mech. Dev. 76, 175 (1998)
3. Rodriguez-Niedenfuhr et al., Anat Embryol 204, 399 (2001)
4. Wilting et al., FASEB J 16, 1271 (2002)
5. Krishnan et al., Cancer Res. 63, 713 (2003)
6. Mouta et al., Cancer Res. 61, 8079, (2001)
7. Padera et al., Science 296, 1883 (2002)

Database References Antigen

Protein RefSeq:	NP_002754.2
Uniprot ID:	Q92786
mRNA RefSeq:	NM_002763.3

Product Specifications

Species reactivity	human
Clone/Ab feature	rabbit IgG
Cross reactivity	ND
Host	rabbit
Clonality	polyclonal
Purification	Protein A purified
Immunogen	Recombinant human Prox-1 (RT #300-052)
Formulation	lyophilized
Buffer	5 mM PBS, pH 7.2

Stability: The lyophilized antibody is stable for at least 2 years at -20°C. After sterile reconstitution the antibody is stable at 2-8°C for up to 6 months. Frozen aliquots are stable for at least 6 months when stored at -20°C. Addition of a carrier protein or 50% glycerol is recommended for frozen aliquots.

Reconstitution: Centrifuge vial prior to opening. Reconstitute in sterile water to a concentration of 0.1-1.0 mg/ml.



AVOID REPEATED FREEZE AND THAW CYCLES!

Applications

Western Blot: Use 1-5 µg/ml
IF/IHC: Use 1:750-1000 (IF)

NOTE: OPTIMAL DILUTIONS SHOULD BE DETERMINED BY EACH LABORATORY FOR EACH APPLICATION!



Anti-human Prox-1

Handling/Applications

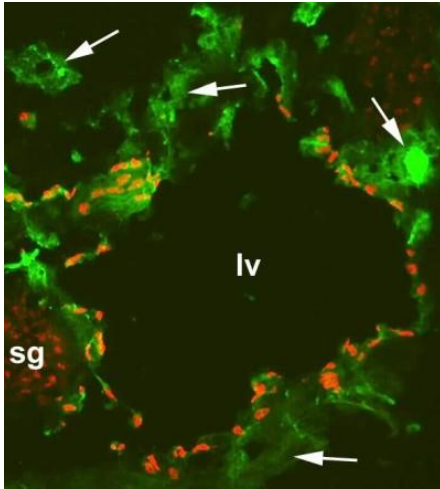


Figure 1: Immunofluorescence with a frozen sections of a mouse embryo at day 13.5 with anti-CD31 [green] and anti-human Prox-1 [red] (RT #102-PA32S). It shows a large lymphatic vessel (lv), blood vessels (arrows) and a sympathetic ganglion (sg) which is also positive for Prox-1

The experiment was performed by PD. Dr. Jörg Wilting, Pädiatrie I, Zentrum für Kinderheilkunde und Jugendmedizin in Göttingen, Germany.

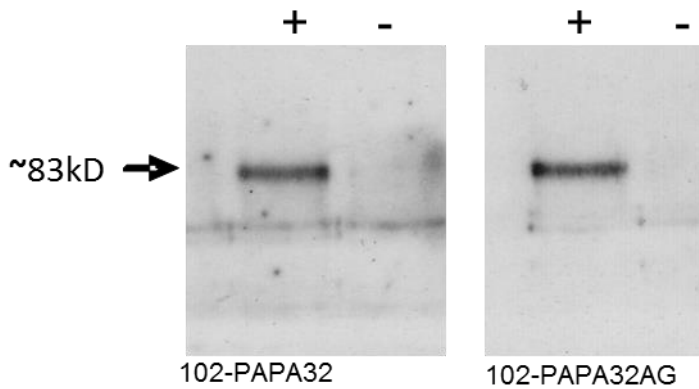


Figure 2: Western analysis with anti-human Prox-1