



20180222BB

Anti-Mouse CXCL16 (#15Q2)

**FOR RESEARCH ONLY! NOT FOR HUMAN USE!**

Cat.-no.:	103-M359
Size:	100 µg
Lot. No.:	According to product label

Preparation: This antibody was produced from a hybridoma (mouse myeloma fused with spleen cells from a rat) immunized with mouse recombinant protein of CXCL16.

Target Background

Synonyms (Target):	Cxcl16; SR-PSOX; Zmynd15; AV290116; BB024863; CXCL16v1; CXCL16v2; 0910001K24Rik
---------------------------	---

Thymus chemokine-1 (TCK-1 or CXCL7) is a member of the CXC subfamily of chemokines. Mouse TCK-1 shares 72% amino acid sequence identity with rat TCK-1.

Database References Target

Protein RefSeq:	NP_075647
Uniprot ID:	Q8BSU2
mRNA RefSeq:	NM_023158

Product Specifications

Host	Rat
Reactivity against	Mouse
Clonality	Monoclonal Antibody
Clone	(#15Q2)
Isotype	IgG2
Purification	Protein G/A chromatography
Antigen	mouse recombinant CXCL14
Formulation	lyophilized
Reconstitution buffer	PBS (sterile)

Reconstitution: Reconstitute the antibody with 200 µl sterile PBS and the final concentration is 500 µg/ml.

Stability: Lyophilized samples are stable for 2 years from date of receipt when stored at -70°C. Reconstituted antibody can be aliquoted and stored frozen at < -20 °C for at least for six months without detectable loss of activity.

Remarks: This antibody detects specifically mouse CXCL16 with WB.

**AVOID REPEATED FREEZE AND THAW CYCLES!**

Applications

The antibody can be used within the following applications:
WB, N, IHC

Recommended usage:

WB: 1:250-1000**Neutralization:** Yes**IHC (Paraffin):** 1:100-200

NOTE: OPTIMAL DILUTIONS SHOULD BE DETERMINED BY EACH LABORATORY FOR EACH APPLICATION!



Anti-Mouse CXCL16 (#15Q2)

Handling/Applications

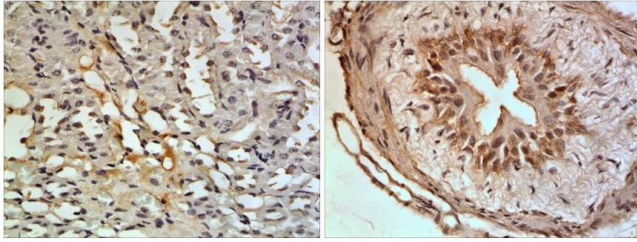


Fig. 1: The Kidney tissue samples from the Folic Acid-induced kidney injury model were fixed using 4% PFA at 4°C for overnight and embedded in paraffin. A 4 µm section was subjected to IHC (1:100-200).
Antigen retrieval: PK (10 µg/ml)