



20180222BB

# Anti-Mouse ADAM-10 (#7H12)

**FOR RESEARCH ONLY! NOT FOR HUMAN USE!**

<b>Cat.-no.:</b>	<b>103-M300</b>
Size:	100 µg
Lot. No.:	According to product label

**Preparation:** This antibody was produced from a hybridoma (mouse myeloma fused with spleen cells from a rat) immunized with mouse recombinant protein of A Disintegrin and Metalloprotease-like Domain 10 ectodomain (ADAM10).

## Target Background

<b>Synonyms (Target):</b>	Adam10; kuz; MADM; kuzbanian; 1700031C13Rik
---------------------------	---

ADAM10 (also known as Kuzbanian, mammalian disintegrin metalloprotease, myelin-associated metalloproteinase) is a member of the ADAM family that contains a disintegrin and metallo-protease-like domain. Like other membrane-anchored ADAMs, ADAM10 consists of the following domains, pro with a cysteine switch and furin cleavage sequence, catalytic with the zinc-binding site and Metturn expected for reprolysins, disintegrin like, cysteine-rich, EGF-like, transmembrane, and cytoplasmic. ADAM10 is highly conserved, with 97% amino acid identity between mouse, rat, bovine and human and 45% identity between mouse and Drosophila. The active enzyme processes notch, notch ligand delta, and amyloid protein precursor at the alpha site, playing an important role in neurogenesis. It also processes the 26 kDa membrane anchored protumor necrosis factor  $\alpha$  (TNF $\alpha$ ) to the 17 kDa mature TNF  $\alpha$ . It cleaves myelin basic protein and type IV collagen. ADAM10 is widely expressed in tissues and resides both on the cell surface and in the cell.

## Database References Target

<b>Protein RefSeq:</b>	NP_031425.2
<b>Uniprot ID:</b>	O35598
<b>mRNA RefSeq:</b>	NM_007399

## Product Specifications

<b>Host</b>	Rat
<b>Reactivity against</b>	Mouse
<b>Clonality</b>	Monoclonal Antibody
<b>Clone</b>	(#7H12)
<b>Isotype</b>	IgG2
<b>Purification</b>	Protein G chromatography
<b>Antigen</b>	recombinant protein of A Disintegrin and Metalloprotease-like Domain 10 ectodomain
<b>Formulation</b>	lyophilized
<b>Reconstitution buffer</b>	PBS (sterile)

**Reconstitution:** Reconstitute the antibody with 200 µl sterile PBS and the final concentration is 500 µg/ml.

**Stability:** Lyophilized samples are stable for 2 years from date of receipt when stored at -70°C. Reconstituted antibody can be aliquoted and stored frozen at < -20 °C for at least for six months without detectable loss of activity.

**Remarks:** This antibody detects mouse ADMA10 and cross reacts with human ADMA10. Weak cross reactivity is observed to ADMA9 and ADMA15 in Western blotting.

**AVOID REPEATED FREEZE AND THAW CYCLES!**

## Applications

The antibody can be used within the following applications:

WB, FC, IHC

### Recommended usage:

**WB** (non-reducing condition): 1:500 – 1000

**FC:** 1:500 – 1000

**IHC** (Paraffin): 1:100-200

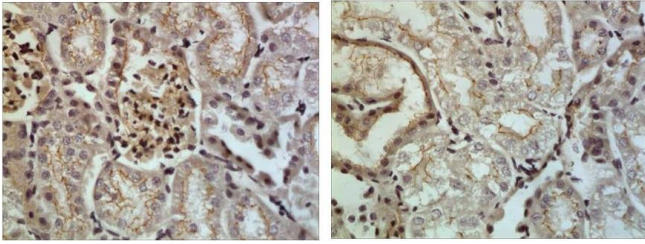
**NOTE: OPTIMAL DILUTIONS SHOULD BE DETERMINED BY EACH LABORATORY FOR EACH APPLICATION!**



## Anti-Mouse ADAM-10 (#7H12)

---

### Handling/Applications



**Fig. 1:** The Kidney tissue samples from the Folic Acid-induced kidney injury model were fixed using 4% PFA at 4°C for overnight and embedded in paraffin. A 4 µm section was subjected to IHC (1:100-200).  
Antigen retrieval: PK (10 µg/ml)