



20180221BB

# Anti-Mouse IL-10 receptor alpha (#9E12)

**FOR RESEARCH ONLY! NOT FOR HUMAN USE!**

<b>Cat.-no.:</b>	<b>103-M242</b>
Size:	100 µg
Lot. No.:	According to product label

**Preparation:** This antibody was produced from a hybridoma (mouse myeloma fused with spleen cells from a rat immunized with purified mouse recombinant protein of IL-10R extracellular domain. The IgG fraction of the culture supernatant was purified by Protein A/G affinity chromatography.

## Target Background

<b>Synonyms (Target):</b>	Il10ra; Il10r; CDw210; CDw210a; mL-10R; AW553859
---------------------------	--

Human and mouse IL-10 receptors are structurally related to the IFN-gamma receptor. These receptors are members of the class II subgroup of the cytokine receptor superfamily. The deduced amino acid sequence of human IL-10 R is approximately 60% identical to mouse IL-10 R. Although human IL-10 has cross-species activities and is active on mouse cells, mouse IL-10 is species-specific in its actions and does not bind to the human IL-10 receptor. The human IL-10 R gene has been mapped to chromosome 11q23.3. Recombinant IL-10 soluble receptor, consisting of the extracellular domain of IL-10 R, binds IL-10 with high affinity in solution and is a potent IL-10 antagonist.

## Database References Target

<b>Protein RefSeq:</b>	NP_032374.1
<b>Uniprot ID:</b>	Q61727
<b>mRNA RefSeq:</b>	NM_008348.2

## Product Specifications

<b>Host</b>	Hamster
<b>Reactivity against</b>	Mouse
<b>Clonality</b>	Monoclonal Antibody
<b>Clone</b>	(#9E12)
<b>Isotype</b>	IgG
<b>Purification</b>	Protein A/G chromatography
<b>Antigen</b>	Mouse recombinant EC domain of IL-10R
<b>Formulation</b>	lyophilized
<b>Reconstitution buffer</b>	PBS (sterile)

**Reconstitution:** Reconstitute the antibody with 200 µl sterile PBS and the final concentration is 500 µg/ml.

**Stability:** Lyophilized samples are stable for 2 years from date of receipt when stored at -70°C. Reconstituted antibody can be aliquoted and stored frozen at < -20 °C for at least for six months without detectable loss of activity.

**Remarks:** This antibody detects mouse IL-10 R alpha in Western blotting.

**AVOID REPEATED FREEZE AND THAW CYCLES!**

## Applications

The antibody can be used within the following applications:  
WB, IHC

### Recommended usage:

**WB:** 1:500-1000

**IHC (Paraffin):** 1:100-200

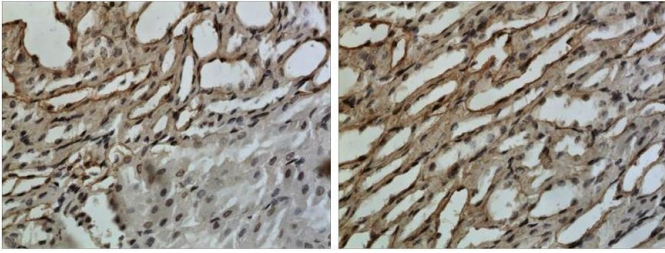
**NOTE: OPTIMAL DILUTIONS SHOULD BE DETERMINED BY EACH LABORATORY FOR EACH APPLICATION!**



## Anti-Mouse IL-10 receptor alpha (#9E12)

---

### Handling/Applications



**Fig. 1:** The Kidney tissue samples from the Folic Acid-induced kidney injury model were fixed using 4% PFA at 4°C for overnight and embedded in paraffin. A 4 µm section was subjected to IHC (1:100-200).  
Antigen retrieval: PK (10 µg/ml)