



20180221BB

Anti-Mouse Gas-6 (#6J2)

**FOR RESEARCH ONLY! NOT FOR HUMAN USE!**

Cat.-no.:	103-M226
Size:	100 µg
Lot. No.:	According to product label

Preparation: This antibody was produced from a hybridoma (mouse myeloma fused with spleen cells from a rat immunized with purified mouse recombinant Gas6. The IgG2 fraction of the culture supernatant was purified by Protein A/G affinity chromatography.

Target Background

Synonyms (Target):	Gas6; Gas-6
---------------------------	-------------

Gas6 (Growth Arrest Specific 6) is one of six structurally unrelated proteins that are secreted by a wide variety of cell types in response to growth arrest. Gas6 and the structurally related Protein S are vitamin K-dependent and have an extensively gamma-carboxylated N-terminal Gla domain, four EGF like repeats, and a C-terminal region with homology to steroid hormone binding globulin (SHBG). Human Gas6 is a 75 kDa protein that shares 77%-79% aa sequence identity with mouse and rat Gas6. Alternate splicing generates isoforms that lack the Gla domain and/or the spacer between the EGF-like and SHBG regions. Gas6 binds and induces signaling through the receptor tyrosine kinases Axl, Dtk, and Mer. Human Gas6 interacts with both mouse and rat orthologs of these receptors. The full length isoform may be cleaved, resulting in release of the free SHBG region which can independently activate Axl. Shed soluble forms of Axl and Mer bind Gas6 and function as decoy receptors.

Database References Target

Protein RefSeq:	NP_062394.2
Uniprot ID:	Q61592
mRNA RefSeq:	NM_019521.2

Product Specifications

Host	Rat
Reactivity against	Mouse
Clonality	Monoclonal Antibody
Clone	(#6J2)
Isotype	IgG2
Purification	Protein G/A chromatography
Antigen	Recombinant mouse Gas-6
Formulation	lyophilized
Reconstitution buffer	PBS (sterile)

Reconstitution: Reconstitute the antibody with 200 µl sterile PBS and the final concentration is 500 µg/ml.

Stability: Lyophilized samples are stable for 2 years from date of receipt when stored at -70°C. Reconstituted antibody can be aliquoted and stored frozen at < -20 °C for at least for six months without detectable loss of activity.

Remarks: This antibody detects mouse Gas6 in Western blotting.

**AVOID REPEATED FREEZE AND THAW CYCLES!**

Applications

The antibody can be used within the following applications:

WB, IHC

Recommended usage:

WB: 1:500-1000

IHC (Paraffin): 1:100-200

NOTE: OPTIMAL DILUTIONS SHOULD BE DETERMINED BY EACH LABORATORY FOR EACH APPLICATION!



Anti-Mouse Gas-6 (#6J2)

Handling/Applications

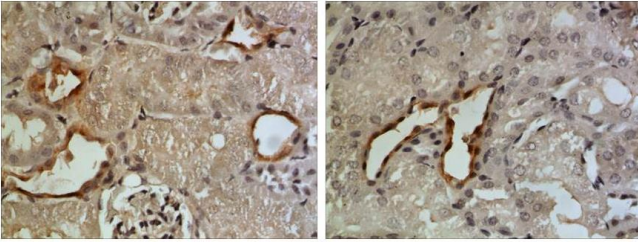


Fig. 1: The Kidney tissue samples from the Folic Acid-induced kidney injury model were fixed using 4% PFA at 4°C for overnight and embedded in paraffin. A 4 µm section was subjected to IHC (1:100-200).
Antigen retrieval: PK (10 µg/ml)