



20180524BB

Anti-Mouse Ly-6G (Gr-1) (#6D17)**FOR RESEARCH ONLY! NOT FOR HUMAN USE!**

Cat.-no.:	103-M206
Size:	100 µg
Lot. No.:	According to product label

Preparation: This antibody was produced from a hybridoma (mouse myeloma fused with spleen cells from a rat) immunized with cell lysates of mouse neutrophils.

Target Background

Synonyms (Target):	Ly6g; Gr1; Gr-1; Ly-6G
---------------------------	------------------------

Gr-1 is a 21-25 kD protein also known as Ly-6G/Ly-6C. This myeloid differentiation antigen is a glycosylphosphatidylinositol (GPI)-linked protein expressed on granulocytes and macrophages. In bone marrow, the expression levels of Gr-1 directly correlate with granulocyte differentiation and maturation; Gr-1 is also transiently expressed on bone marrow cells in the monocyte lineage. Gr-1+ cells have recently been implicated in the development of antitumor responses.

Database References Target

Protein RefSeq:	CAA50269.1
Uniprot ID:	P35461
mRNA RefSeq:	XM_001475753.2

Product Specifications

Host	Rat
Reactivity against	Mouse
Clonality	Monoclonal Antibody
Clone	(#6D17)
Isotype	IgG2
Purification	Protein G chromatography
Antigen	Cell lysates of mouse neutrophils
Formulation	lyophilized
Reconstitution buffer	PBS (sterile)

Reconstitution: Reconstitute the antibody with 200 µl sterile PBS and the final concentration is 500 µg/ml.

Stability: Lyophilized samples are stable for 2 years from date of receipt when stored at -70°C. Reconstituted antibody can be aliquoted and stored frozen at < -20 °C for at least for six months without detectable loss of activity.

Remarks: The Ly-6G antibody has been used to identify peripheral blood neutrophils and deplete granulocytes in vivo.

**AVOID REPEATED FREEZE AND THAW CYCLES!****Applications**

The antibody can be used within the following applications:

FC, IHC (P)

Recommended usage:

Flow cytometry: 1:500 - 1:2000

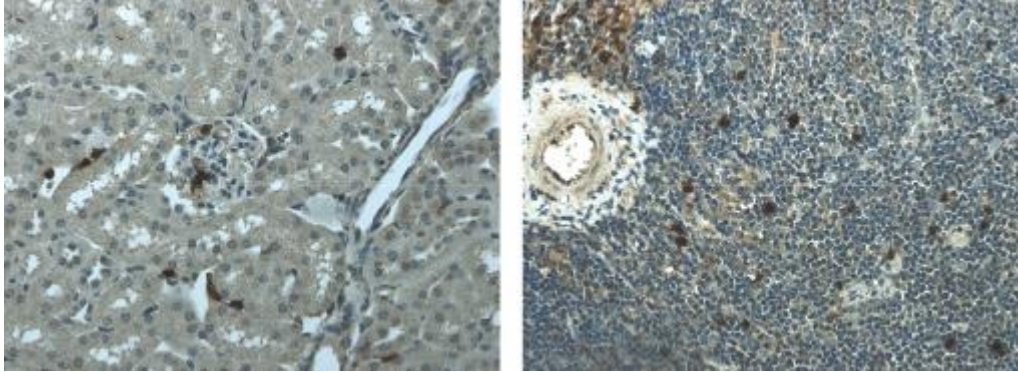
IHC (paraffine): 1:100 - 1:400

NOTE: OPTIMAL DILUTIONS SHOULD BE DETERMINED BY EACH LABORATORY FOR EACH APPLICATION!



Anti-Mouse Ly-6G (Gr-1) (#6D17)

Application/Handling



Ly-6G immunohistochemistry staining of paraffin sections of mouse kidney and spleen tissues from LPS exposed animal.