



20150218ML

Anti-Mouse IL-1 R2 (#7D7)

**FOR RESEARCH ONLY! NOT FOR HUMAN USE!**

Cat.-no.:	103-M138
Size:	100 µg
Lot. No.:	According to product label

Preparation: This antibody was produced from a hybridoma (mouse myeloma fused with spleen cells from a rat) immunized with mouse recombinant extracellular domain of mouse IL-1 R2 protein. IgG fraction of the tissue culture supernatant was purified by Protein A/G affinity chromatography.

Target Background

Synonyms (Target):	IL1R2; IL1RB; CD121b; Interleukin 1 receptor 2
---------------------------	--

IL-1 receptor type II (IL1R-II) is a 65 kD member of the immunoglobulin superfamily also known as IL-1 receptor (IL1R) type II. The IL1R family is composed of three proteins: IL1R type I, IL1-RII, and the widely expressed IL-1RAcP.

Database References Target

Protein RefSeq:	NP_034685.1
UniProt ID:	P27931
mRNA RefSeq:	NM_010555.4

Product Specifications

Host	Rat
Reactivity against	Mouse
Clonality	Monoclonal Antibody
Clone	(#7D7)
Isotype	IgG2
Purification	Protein G/A chromatography
Antigen	recombinant extracellular domain of mouse IL1R-II
Formulation	lyophilized
Reconstitution buffer	PBS (sterile)

Reconstitution: Reconstitute the antibody with 200 µl sterile PBS and the final concentration is 500 µg/ml.

Stability: Lyophilized samples are stable for 2 years from date of receipt when stored at -70°C. Reconstituted antibody can be aliquoted and stored frozen at < -20 °C for at least for six months without detectable loss of activity.

Remarks: This antibody was selected for its ability to detect mouse IL-1 R2.

**AVOID REPEATED FREEZE AND THAW CYCLES!**

Applications

The antibody can be used within the following applications:

WB, IHC (P)

Recommended usage:

IHC (paraffine): 1:50 - 1:100

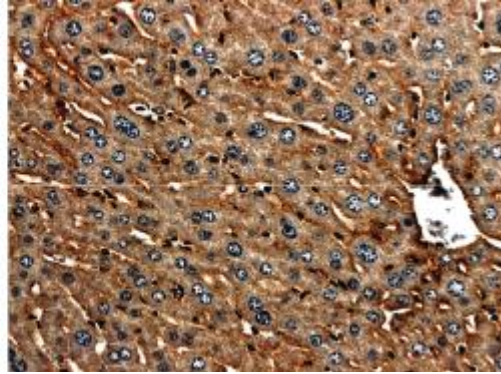
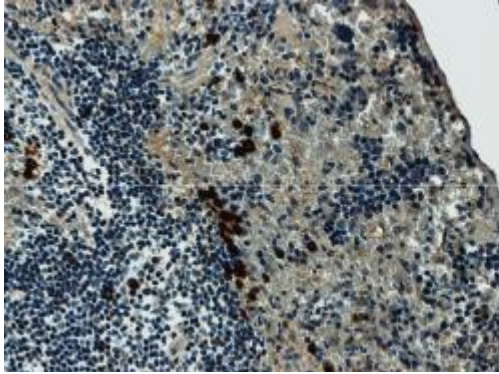
Western Blot: 1:500 - 1:1000

NOTE: OPTIMAL DILUTIONS SHOULD BE DETERMINED BY EACH LABORATORY FOR EACH APPLICATION!



Anti-Mouse IL-1 R2 (#7D7)

Application/Handling



IL1R-II immunohistochemistry staining of paraffin sections of mouse Spleen and liver tissues from LPS exposed animals.