



20180406BB

Anti-Mouse L-Selectin (#MAB0709)

**FOR RESEARCH ONLY! NOT FOR HUMAN USE!**

Cat.-no.:	103-M108
Size:	100 µg
Lot. No.:	According to product label

Preparation: This antibody was produced from a hybridoma (mouse myeloma fused with spleen cells from a rat immunized with mouse B lymphocyte cells). IgG2 fraction of the culture supernatant was purified by Protein G affinity chromatography.

Target Background

Synonyms (Target):	Sell; Lnh; CD62L; Ly-22; Lyam1; Ly-m22; Lyam-1; LECAM-1; AI528707; L-selectin; Leukocyte Selectin, LAM-1, LECCAM-1, TQ1, Leu-8, MEL-14 antigen, DREG, lymph node homing receptor
---------------------------	--

The Selectin family is comprised of three members, E-Selectin, L-Selectin, and P-Selectin. E-Selectin [endothelial leukocyte adhesion molecule-1 (ELAM-1), CD62E] is transiently expressed on vascular endothelial cells in response to IL-1 beta and TNF-alpha. The human and rat proteins share approximately 67% amino acid sequence identity. The mouse and rat proteins share approximately 78% amino acid sequence identity. L-Selectin is expressed constitutively on a wide variety of leukocytes. Two forms of L-Selectin have been reported, apparently arising as a result of post-translational modifications. Human and mouse L-Selectin share 76% amino acid sequence identity. Human P-Selectin (GMP-140, LECAM-3, PADGEM, CD62P) is expressed by activated platelets and endothelial cells. The extracellular domains of human and mouse P-Selectin share approximately 73% amino acid sequence identity.

Database References Target

Protein RefSeq:	NP_035476.1
Uniprot ID:	P18337
mRNA RefSeq:	NM_011346.2

Product Specifications

Host	Rat
Reactivity against	Mouse
Clonality	Monoclonal Antibody
Clone	(#MAB0709)
Isotype	IgG2
Purification	Protein A/G chromatography
Antigen	Mouse B lymphocyte cells
Formulation	lyophilized
Reconstitution buffer	PBS (sterile)

Reconstitution: Reconstitute the antibody with 200 µl sterile PBS and the final concentration is 500 µg/ml.

Stability: Lyophilized samples are stable for 2 years from date of receipt when stored at -70°C. Reconstituted antibody can be aliquoted and stored frozen at < -20 °C for at least for six months without detectable loss of activity.

Remarks: This antibody was selected for its ability to detect mouse L-Selectin protein.

**AVOID REPEATED FREEZE AND THAW CYCLES!**

Applications

The antibody can be used within the following applications:

IHC (P), FC

Recommended usage:

IHC (paraffine): 1:100 - 1:300

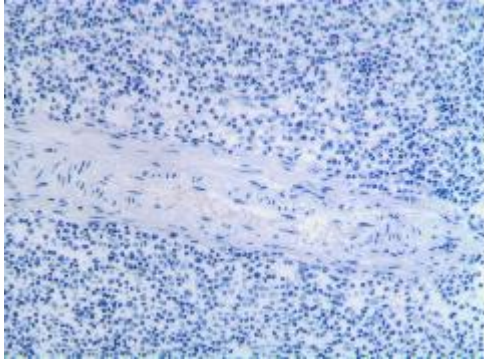
Flow cytometry: 1:100 - 1:1000

NOTE: OPTIMAL DILUTIONS SHOULD BE DETERMINED BY EACH LABORATORY FOR EACH APPLICATION!

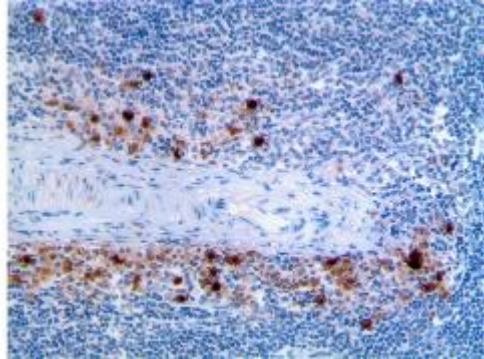


Anti-Mouse L-Selectin (#MAB0709)

Application/Handling



Negative Control



103-M108

Fig. 1: Formalin fixed and paraffin embedded mouse spleen tissue section was subjected to immunohistochemistry staining of L-Selectin using 103-M108.