



20180406BB

Anti-Mouse CD31 [PECAM-1] (#1D12)

**FOR RESEARCH ONLY! NOT FOR HUMAN USE!**

| | |
|------------------|----------------------------|
| Cat.-no.: | 103-M104 |
| Size: | 100 µg |
| Lot. No.: | According to product label |

Preparation: This antibody was produced from a hybridoma (mouse myeloma fused with spleen cells from a rat immunized with mouse endothelial membrane protein). IgG2a fraction of the culture supernatant was purified by Protein G affinity chromatography.

Target Background

| | |
|---------------------------|---------|
| Synonyms (Target): | PECAM-1 |
|---------------------------|---------|

The CD31 adhesion molecule, also known as PECAM-1, is expressed in large amounts on endothelial cells at intercellular junctions, on T cell subsets, and to a lesser extent, on platelets and most leukocytes. CD31 is required for the transendothelial migration of leukocytes through the intercellular spaces between vascular endothelial cells.

Database References Target

| | |
|------------------------|-------------|
| Protein RefSeq: | NP_032842.2 |
| Uniprot ID: | Q08481 |
| mRNA RefSeq: | NM_008816.2 |

Product Specifications

| | |
|------------------------------|------------------------------------|
| Host | Rat |
| Reactivity against | Mouse |
| Clonality | Monoclonal Antibody |
| Clone | (#1D12) |
| Isotype | IgG2a |
| Purification | Protein G chromatography |
| Antigen | Mouse endothelial membrane protein |
| Formulation | lyophilized |
| Reconstitution buffer | PBS (sterile) |

Reconstitution: Reconstitute the antibody with 200 µl sterile PBS and the final concentration is 500 µg/ml.

Stability: Lyophilized samples are stable for 2 years from date of receipt when stored at -70°C. Reconstituted antibody can be aliquoted and stored frozen at < -20 °C for at least for six months without detectable loss of activity.

Remarks: This antibody was selected for its ability to detect mouse PECAM-1.

**AVOID REPEATED FREEZE AND THAW CYCLES!**

Applications

The antibody can be used within the following applications:

IHC

Recommended usage:

IHC (paraffine): 1:100 - 1:400

NOTE: OPTIMAL DILUTIONS SHOULD BE DETERMINED BY EACH LABORATORY FOR EACH APPLICATION!



Anti-Mouse CD31 [PECAM-1] (#1D12)

Application/Handling

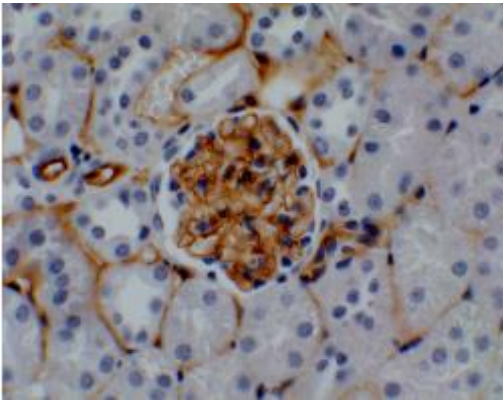


Fig. 1: Both paraformalin and Bouin's solution fixed and paraffin embedded normal mouse kidney section was subjected to immunohistochemistry staining (ABC) of PECAM-1 (CD31) using 103-M104. Specific PECAM-1 signal (DAB) is noted in vascular endothelial cells.

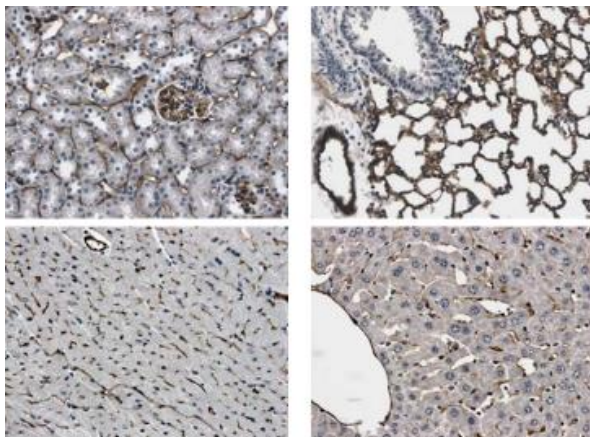


Fig. 2: PECAM1 (CD31) immunohistochemistry staining of paraffin sections of mouse kidney, lung, heart and liver tissues from LPS exposed animals.