



20150720BB

Anti-Human TSLP R (#9T2)

**FOR RESEARCH ONLY! NOT FOR HUMAN USE!**

Cat.-no.:	101-M692
Size:	100 µg
Lot. No.:	According to product label

Preparation: This antibody was produced from a hybridoma (mouse myeloma fused with spleen cells from a mouse) immunized with human recombinant protein of TSLP R extracellular domain.

Target Background

Synonyms (Target):	CRLF2; CRL2; TSLPR; CRLF2Y
---------------------------	----------------------------

TSLP R, also named Delta and CRLM-2 (Cytokine Receptor-like Module-2), was originally cloned as a novel type 1 cytokine receptor with similarity to the common gamma chain (gamma c). It was subsequently identified as a subunit of the cellular receptor for the IL-7-like cytokine TSLP and termed TSLP R. TSLP R shows 24% sequence identity with the mouse gc receptor. TSLP R expression is constitutive in immune and hematopoietic cells, but is up-regulated in Th2 cells.

Database References Target

Protein RefSeq:	NP_071431.2
Uniprot ID:	Q9HC73
mRNA RefSeq:	NM_022148.2

Product Specifications

Host	Mouse
Reactivity against	Human
Clonality	Monoclonal Antibody
Clone	(#9T2)
Isotype	IgG1
Purification	Protein G chromatography
Antigen	recombinant human TSLP R EC domain
Formulation	lyophilized
Reconstitution buffer	PBS (sterile)

Reconstitution: Reconstitute the antibody with 200 µl sterile PBS and the final concentration is 500 µg/ml.

Stability: Lyophilized samples are stable for 2 years from date of receipt when stored at -70°C. Reconstituted antibody can be aliquoted and stored frozen at < -20 °C for at least for six months without detectable loss of activity.

Remarks: This antibody was selected for its ability to detect human TSLP R.

**AVOID REPEATED FREEZE AND THAW CYCLES!**

Applications

The antibody can be used within the following applications:

WB, IHC (P)

Recommended usage:

WB: Use at 1:500-1000

IHC (Paraffin):

NOTE: OPTIMAL DILUTIONS SHOULD BE DETERMINED BY EACH LABORATORY FOR EACH APPLICATION!



Anti-Human TSLP R (#9T2)

Handling/Application

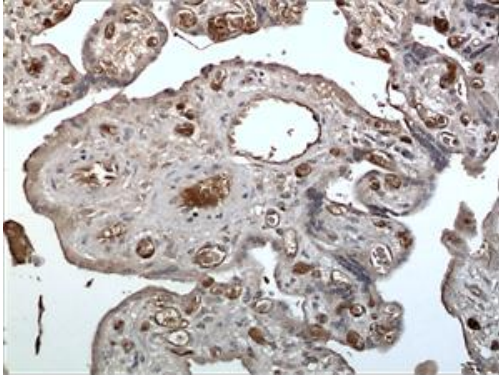


Fig. 1: A 10% Buffer formalin fixed and paraffin embedded human placental tissue section (4um) is subjected to IHC staining using a mouse anti-human TSLP R monoclonal antibody. Tissue section was pretreated in citric buffer (ph6.0) with microwave for antigen retrieval before IHC is applied.