



20150720BB

Anti-Human NrCAM (#8E25)

**FOR RESEARCH ONLY! NOT FOR HUMAN USE!**

Cat.-no.:	101-M591
Size:	100 µg
Lot. No.:	According to product label

Preparation: This antibody was produced from a hybridoma (mouse myeloma fused with spleen cells from a mouse) immunized with extracellular domain of human recombinant protein of NrCAM.

Target Background

Synonyms (Target):	NRCAM
---------------------------	-------

NgCAM related cell adhesion molecule (or NrCAM), also known as Bravo, belongs to the L1 family of cell adhesion molecules, which includes L1, neurofascin and close homolog of L1 (CHL-1/L1CAM-2). These molecules are type I transmembrane proteins that have six Ig-like domains and 4 to 5 Fibronectin type III-like domains in their extracellular region. They also share a conserved cytoplasmic region containing an ankyrin-binding site. L1 family cell adhesion molecules are expressed primarily in the nervous system where they share overlapping functions in controlling axonal growth and guidance.

Database References Target

Protein RefSeq:	NP_005001.3
Uniprot ID:	Q92823
mRNA RefSeq:	NM_005010.4

Product Specifications

Host	Mouse
Reactivity against	Human
Clonality	Monoclonal Antibody
Clone	(#8E25)
Isotype	IgG2
Purification	Protein G chromatography
Antigen	recombinant human NrCAM
Formulation	lyophilized
Reconstitution buffer	PBS (sterile)

Reconstitution: Reconstitute the antibody with 200 µl sterile PBS and the final concentration is 500 µg/ml.

Stability: Lyophilized samples are stable for 2 years from date of receipt when stored at -70°C. Reconstituted antibody can be aliquoted and stored frozen at < -20 °C for at least for six months without detectable loss of activity.

Remarks: This antibody was selected for its ability to detect human NrCAM.

**AVOID REPEATED FREEZE AND THAW CYCLES!**

Applications

The antibody can be used within the following applications:

WB, IHC (P)

Recommended usage:

WB: Use at 1:500-1000

IHC (Paraffin): Yes

NOTE: OPTIMAL DILUTIONS SHOULD BE DETERMINED BY EACH LABORATORY FOR EACH APPLICATION!



Anti-Human NrCAM (#8E25)

Application/Handling

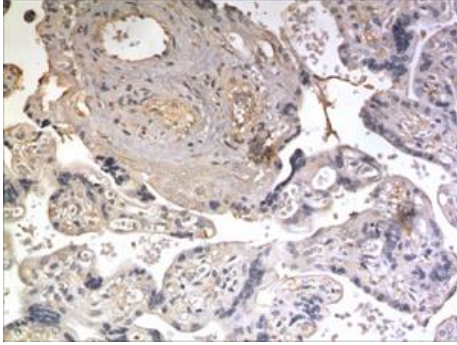


Fig. 1: A 10% Buffer formalin fixed and paraffin embedded human placental tissue section (4um) is subjected to IHC staining using a mouse anti-human NrCAM monoclonal antibody. Tissue section was pretreated in citric buffer (ph6.0) with microwave for antigen retrieval before IHC is applied.