



20150720BB

Anti-Human LTBP-1 (#5L38)

**FOR RESEARCH ONLY! NOT FOR HUMAN USE!**

Cat.-no.:	101-M558
Size:	100 µg
Lot. No.:	According to product label

Preparation: This antibody was produced from a hybridoma (mouse myeloma fused with spleen cells from a mouse) immunized with human recombinant protein of LTBP-1.

Target Background

Synonyms (Target):	LTBP1
---------------------------	-------

TGF-beta binding proteins 1-4/Latent TGF-beta binding proteins 1-4 (LTBPs 1-4) are members of the LTBP/fibrillin family of proteins. They are characterized by the presence of multiple EGF-like repeats and a series of cysteine-rich repeats. Extracellularly, LTBPs form part of a large inactive TGF-beta complex where they serve to anchor a mature, dimeric TGF-beta/TGF-beta propeptide complex to the ECM.

Database References Target

Protein RefSeq:	NP_996826.2
Uniprot ID:	Q14766
mRNA RefSeq:	NM_206943.2

Product Specifications

Host	Mouse
Reactivity against	Human
Clonality	Monoclonal Antibody
Clone	(#5L38)
Isotype	IgG1
Purification	Protein G chromatography
Antigen	human recombinant LTBP-1
Formulation	lyophilized
Reconstitution buffer	PBS (sterile)

Reconstitution: Reconstitute the antibody with 200 µl sterile PBS and the final concentration is 500 µg/ml.

Stability: Lyophilized samples are stable for 2 years from date of receipt when stored at -70°C. Reconstituted antibody can be aliquoted and stored frozen at < -20 °C for at least for six months without detectable loss of activity.

Remarks: This antibody was selected for its ability to detect human LTBP-1.

**AVOID REPEATED FREEZE AND THAW CYCLES!**

Applications

The antibody can be used within the following applications:

WB, IHC (P)

Recommended usage:

WB: Use at 1:500-1000

IHC (Paraffin):

NOTE: OPTIMAL DILUTIONS SHOULD BE DETERMINED BY EACH LABORATORY FOR EACH APPLICATION!



Anti-Human LTBP-1 (#5L38)

Handling/Application

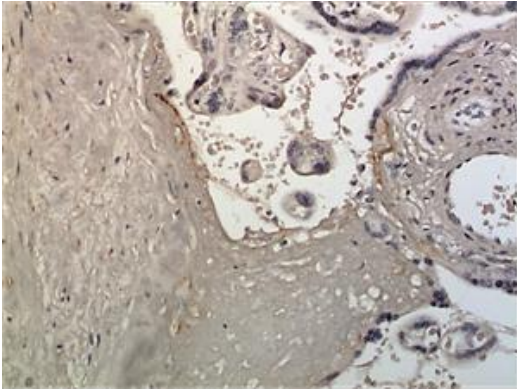


Fig. 1: A 10% Buffer formalin fixed and paraffin embedded human placental tissue section (4um) is subjected to IHC staining using a mouse anti-human LTBP-1 monoclonal antibody. Tissue section was pretreated in citric buffer (ph6.0) with microwave for antigen retrieval before IHC is applied.