



20150720BB

Anti-Human Kallikrein 13 (#5X29)

**FOR RESEARCH ONLY! NOT FOR HUMAN USE!**

Cat.-no.:	101-M528
Size:	100 µg
Lot. No.:	According to product label

Preparation: This antibody was produced from a hybridoma (mouse myeloma fused with spleen cells from a mouse) immunized with human recombinant protein of Kallikrein-13.

Target Background

Synonyms (Target):	KLK13; KLKL4; KLK-L4
---------------------------	----------------------

The human tissue kallikrein (KLK) gene family contains 15 members that play important roles in cancer. Notably, kallikrein-1, also known as tissue kallikrein, cleaves kininogen to release the vasoactive kinin peptide, bradykinin or lysyl-bradykinin. Kallikrein-3, called prostate specific antigen (PSA), is an established tumor marker that aids in the diagnosis, staging, and follow up of prostate cancer. Kallikrein-4 is specifically expressed in the prostate and over-expressed in prostate cancer. Kallikrein-5 is widely expressed but found at high levels in skin, breast, brain and testis; over-expression is an indicator of poor prognosis in ovarian cancer. Kallikrein-8 is expressed in the brain and is a novel marker of ovarian and cervical cancer.

Database References Target

Protein RefSeq:	NP_056411.1
Uniprot ID:	Q9UKR3
mRNA RefSeq:	NM_015596.1

Product Specifications

Host	Mouse
Reactivity against	Human
Clonality	Monoclonal Antibody
Clone	(#5X29)
Isotype	IgG2
Purification	Protein G chromatography
Antigen	human recombinant Kallikrein-13
Formulation	lyophilized
Reconstitution buffer	PBS (sterile)

Reconstitution: Reconstitute the antibody with 200 µl sterile PBS and the final concentration is 500 µg/ml.

Stability: Lyophilized samples are stable for 2 years from date of receipt when stored at -70°C. Reconstituted antibody can be aliquoted and stored frozen at < -20 °C for at least for six months without detectable loss of activity.

Remarks: This antibody was selected for its ability to detect human Kallikrein 13.

**AVOID REPEATED FREEZE AND THAW CYCLES!**

Applications

The antibody can be used within the following applications:

WB, N, IHC (P)

Recommended usage:

Western Blot: 1:500 - 1:1000

Neutralization of Kallikrein 13 bioactivity: Yes

IHC (Paraffine)

NOTE: OPTIMAL DILUTIONS SHOULD BE DETERMINED BY EACH LABORATORY FOR EACH APPLICATION!



Anti-Human Kallikrein 13 (#5X29)

Handling/Application

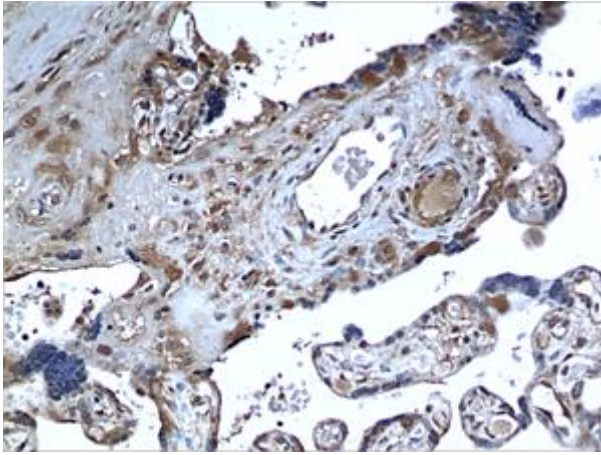


Fig. 1: A 10% Buffer formalin fixed and paraffin embedded human placental tissue section (4um) is subjected to IHC staining using a mouse anti-human Kallikrein-13 monoclonal antibody. Tissue section was pretreated in citric buffer (ph6.0) with microwave for antigen retrieval before IHC is applied.