



20150720BB

Anti-Human IL-20 receptor alpha (#9F40)

**FOR RESEARCH ONLY! NOT FOR HUMAN USE!**

Cat.-no.:	101-M504
Size:	100 µg
Lot. No.:	According to product label

Preparation: This antibody was produced from a hybridoma (mouse myeloma fused with spleen cells from a mouse) immunized with human recombinant protein of IL-20 Ra extracellular domain.

Target Background

Synonyms (Target):	IL20RA; IL-20R1; ZCYTOR7
---------------------------	--------------------------

IL-20 R alpha is widely expressed and is detected at high levels in multiple tissues including skin, testis, heart, placenta, salivary gland and prostate gland. The expression of IL-20 R alpha, together with that of IL-20 R beta, is upregulated in psoriatic skin lesions on keratinocytes, immune cells, and endothelial cells. IL-20 R alpha heterodimerizes with IL-20 R beta to form the functional receptor that mediates IL-19, IL-20 and IL-24 signals. IL-20 R alpha also heterodimerizes with IL-10 R beta to form the functional receptor complex for IL-26. Binding of these IL-10 family class II cytokines to their functional receptors induces activation of the JAK-STAT signal transduction pathway. At low ligand concentrations, STAT3 has been shown to be the predominant STAT proteins activated through either complexes.

Database References Target

Protein RefSeq:	NP_055247.3
Uniprot ID:	Q9UHF4
mRNA RefSeq:	NM_014432.2

Product Specifications

Host	Mouse
Reactivity against	Human
Clonality	Monoclonal Antibody
Clone	(#9F40)
Isotype	IgG1
Purification	Protein G chromatography
Antigen	recombinant human IL-20 Ralpha EC domain
Formulation	lyophilized
Reconstitution buffer	PBS (sterile)

Reconstitution: Reconstitute the antibody with 200 µl sterile PBS and the final concentration is 500 µg/ml.

Stability: Lyophilized samples are stable for 2 years from date of receipt when stored at -70°C. Reconstituted antibody can be aliquoted and stored frozen at < -20 °C for at least for six months without detectable loss of activity.

Remarks: This antibody was selected for its ability to detect human IL-20 receptor.

**AVOID REPEATED FREEZE AND THAW CYCLES!**

Applications

The antibody can be used within the following applications:

WB, IHC (P)

Recommended usage:

Western Blot: 1:500 - 1:1000

IHC (Paraffin): 1:20 - 1:100

NOTE: OPTIMAL DILUTIONS SHOULD BE DETERMINED BY EACH LABORATORY FOR EACH APPLICATION!



Anti-Human IL-20 receptor alpha (#9F40)

Application/Handling

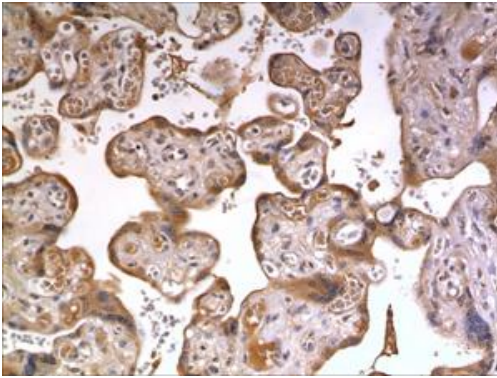


Fig. 1: A 10% Buffer formalin fixed and paraffin embedded human placental tissue section (4um) is subjected to IHC staining using a mouse anti-human IL-20 R alpha monoclonal antibody. Tissue section was pretreated in citric buffer (ph6.0) with microwave for antigen retrieval before IHC is applied.