



20150720BB

Anti-Human IL-15 receptor alpha (#5M53)

**FOR RESEARCH ONLY! NOT FOR HUMAN USE!**

Cat.-no.:	101-M481
Size:	100 µg
Lot. No.:	According to product label

Preparation: This antibody was produced from a hybridoma (mouse myeloma fused with spleen cells from a mouse) immunized with human recombinant protein of IL-15R a extracellular domain.

Target Background

Synonyms (Target):	IL15RA; CD215
---------------------------	---------------

Interleukin 15 receptor alpha (IL-15 R alpha) is a high affinity receptor that specifically binds IL-15 and associates as a heterotrimer with the IL-2 receptor beta and gamma subunits (Common gamma chain, or gamma c) to initiate signal transduction. IL-15 R alpha is expressed on a wide variety of T and B cells as well as non-lymphoid cells. Human IL-15 R alpha shares 45% amino acid sequence homology with the mouse form of the receptor. Eight isoforms of IL-15 R alpha mRNA have been identified, resulting from alternative splicing events involving different exons.

Database References Target

Protein RefSeq:	NP_002180.1
Uniprot ID:	Q13261
mRNA RefSeq:	NM_002189.3

Product Specifications

Host	Mouse
Reactivity against	Human
Clonality	Monoclonal Antibody
Clone	(#5M53)
Isotype	IgG2
Purification	Protein G chromatography
Antigen	recombinant human IL-15 alpha EC domain
Formulation	lyophilized
Reconstitution buffer	PBS (sterile)

Reconstitution: Reconstitute the antibody with 200 µl sterile PBS and the final concentration is 500 µg/ml.

Stability: Lyophilized samples are stable for 2 years from date of receipt when stored at -70°C. Reconstituted antibody can be aliquoted and stored frozen at < -20 °C for at least for six months without detectable loss of activity.

Remarks: This antibody was selected for its ability to detect human IL-15R alpha.

**AVOID REPEATED FREEZE AND THAW CYCLES!**

Applications

The antibody can be used within the following applications:

WB, IHC (P)

Recommended usage:

Western Blot: 1:500 - 1:1000

IHC (Paraffin): Yes

NOTE: OPTIMAL DILUTIONS SHOULD BE DETERMINED BY EACH LABORATORY FOR EACH APPLICATION!



Anti-Human IL-15 receptor alpha (#5M53)

Application/Handling

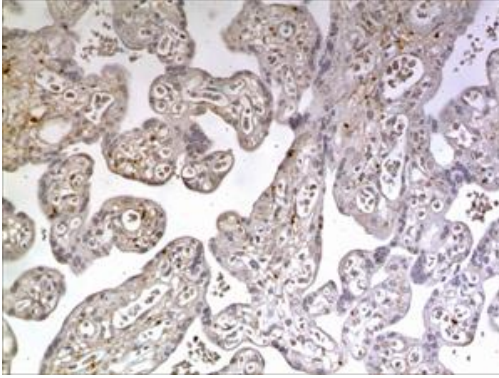


Fig. 1: A 10% Buffer formalin fixed and paraffin embedded human placental tissue section (4um) is subjected to IHC staining using a mouse anti-human IL-15 R alpha monoclonal antibody. Tissue section was pretreated in citric buffer (ph6.0) with microwave for antigen retrieval before IHC is applied.