



20150720BB

Anti-Human CRIM1 (#16G1)

**FOR RESEARCH ONLY! NOT FOR HUMAN USE!**

| | |
|------------------|----------------------------|
| Cat.-no.: | 101-M340 |
| Size: | 100 µg |
| Lot. No.: | According to product label |

Preparation: This antibody was produced from a hybridoma (mouse myeloma fused with spleen cells from a mouse) immunized with human recombinant CRIM1 extracellular domain.

Target Background

| | |
|---------------------------|--------------------|
| Synonyms (Target): | CRIM1; S52; CRIM-1 |
|---------------------------|--------------------|

CRIM1, also known as cysteine rich motor neuron 1, is a type I transmembrane glycoprotein containing an N-terminal IGF-binding protein-like motif and six von Willebrand-like cysteine-rich repeats (CRRs) in its extracellular domain. CRIM1 CRRs are similar to those in the BMP-binding antagonists such as Chordin. CRIM1 can interact with TGF-beta family ligands to modulate TGF-beta family ligand functions.

Database References Target

| | |
|------------------------|-------------|
| Protein RefSeq: | NP_057525.1 |
| Uniprot ID: | Q9NZV1 |
| mRNA RefSeq: | NM_016441.2 |

Product Specifications

| | |
|------------------------------|-----------------------------------|
| Host | Mouse |
| Reactivity against | Human |
| Clonality | Monoclonal Antibody |
| Clone | (#16G1) |
| Isotype | IgG1 |
| Purification | Protein G chromatography |
| Antigen | Human recombinant CRIM1 EC domain |
| Formulation | lyophilized |
| Reconstitution buffer | PBS (sterile) |

Reconstitution: Reconstitute the antibody with 200 µl sterile PBS and the final concentration is 500 µg/ml.

Stability: Lyophilized samples are stable for 2 years from date of receipt when stored at -70°C. Reconstituted antibody can be aliquoted and stored frozen at < -20 °C for at least for six months without detectable loss of activity.

Remarks: This antibody was selected for its ability to detect human CRIM1.

**AVOID REPEATED FREEZE AND THAW CYCLES!**

Applications

The antibody can be used within the following applications:

WB, IHC (P)

Recommended usage:

WB: 1:500-1000

IHC (Paraffin): Yes

NOTE: OPTIMAL DILUTIONS SHOULD BE DETERMINED BY EACH LABORATORY FOR EACH APPLICATION!



Anti-Human CRIM1 (#16G1)

Application/Handling

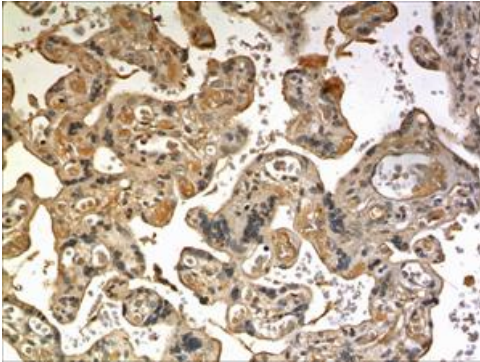


Fig. 1: A 10% Buffer formalin fixed and paraffin embedded human placental tissue section (4um) is subjected to IHC staining using a mouse anti-human CRIM1 monoclonal antibody. Tissue section was pretreated in citric buffer (ph6.0) with microwave for antigen retrieval before IHC is applied.