



20150720BB

# Anti-Human Common beta chain (#7D20)

**FOR RESEARCH ONLY! NOT FOR HUMAN USE!**

<b>Cat.-no.:</b>	<b>101-M333</b>
Size:	100 µg
Lot. No.:	According to product label

**Preparation:** This antibody was produced from a hybridoma (mouse myeloma fused with spleen cells from a mouse) immunized with human recombinant protein of Common b chain.

## Target Background

<b>Synonyms (Target):</b>	Common beta chain
---------------------------	-------------------

The high-affinity receptors for Interleukin-3 (IL-3), IL-5, and Granulocyte-Macrophage Colony-stimulating Factor (GM-CSF) consist of a cytokine-specific a chain, and a shared common beta chain subunit (CD131) that is essential for receptor signaling. CD131 also associates with the receptor for Erythropoietin, forming a tissue-protective heteroreceptor complex. Phosphorylation of CD131 following receptor activation imparts growth and survival signals to the responding hematopoietic cells.

## Database References Target

<b>Protein RefSeq:</b>	NP_000386.1
<b>Uniprot ID:</b>	P32927
<b>mRNA RefSeq:</b>	NM_000395.2

## Product Specifications

<b>Host</b>	Mouse
<b>Reactivity against</b>	Human
<b>Clonality</b>	Monoclonal Antibody
<b>Clone</b>	(#7D20)
<b>Isotype</b>	IgG1
<b>Purification</b>	Protein G chromatography
<b>Antigen</b>	human recombinant Common beta chain
<b>Formulation</b>	lyophilized
<b>Reconstitution buffer</b>	PBS (sterile)

**Reconstitution:** Reconstitute the antibody with 200 µl sterile PBS and the final concentration is 500 µg/ml.

**Stability:** Lyophilized samples are stable for 2 years from date of receipt when stored at -70°C. Reconstituted antibody can be aliquoted and stored frozen at < -20 °C for at least for six months without detectable loss of activity.

**Remarks:** This antibody was selected for its ability to detect human Common Beta chain.

**AVOID REPEATED FREEZE AND THAW CYCLES!**

## Applications

The antibody can be used within the following applications:

WB, IHC (P)

### Recommended usage:

**WB:** 1:500-1000

**IHC (Paraffin):** Yes

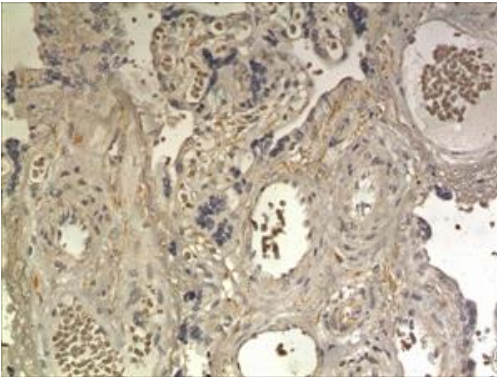
**NOTE: OPTIMAL DILUTIONS SHOULD BE DETERMINED BY EACH LABORATORY FOR EACH APPLICATION!**



## Anti-Human Common beta chain (#7D20)

---

### Application/Handling



**Fig. 1:** A 10% Buffer formalin fixed and paraffin embedded human placental tissue section (4um) is subjected to IHC staining using a mouse anti-human Common beta chain monoclonal antibody. Tissue section was pretreated in citric buffer (ph6.0) with microwave for antigen retrieval before IHC is applied.