



20150720BB

# Anti-Human CCRL-2 (#5A15)

**FOR RESEARCH ONLY! NOT FOR HUMAN USE!**

<b>Cat.-no.:</b>	<b>101-M286</b>
Size:	100 µg
Lot. No.:	According to product label

**Preparation:** CCRL-2 exists as two isoforms: CRAM-A and CRAM-B. This antibody was produced from a hybridoma (mouse myeloma fused with spleen cells from a mouse) immunized with human recombinant protein of CCRL-2 (CRAM-A).

## Target Background

<b>Synonyms (Target):</b>	CCRL2; HCR; CKRX; CRAM; CRAM-A; CRAM-B
---------------------------	--

Chemokine receptors are seven-transmembrane domain G-protein coupled receptors that mediate the biological activities of chemokines. Most of these receptors exhibit promiscuous binding properties whereby several different chemokines signal through the same receptor. They are named according to the chemokine subfamily they bind. There are currently eleven CC-specific receptors designated CCR1 to CCR11. HCR (Human Chemokine Receptor), also known as CRAM, CKRX, and CCRL2, is a G protein-linked seven transmembrane domain spanning chemokine receptor that exists in two isoforms CRAM-A and CRAM-B. The two isoforms differ at the N-terminus with CRAM-A having an additional 12 amino acids. Cells reported to express HCR/CRAM include peripheral blood cells, monocytes, neutrophils, and T cells.

## Database References Target

<b>Protein RefSeq:</b>	NP_003956.2
<b>Uniprot ID:</b>	O00421
<b>mRNA RefSeq:</b>	NM_003965.4

## Product Specifications

<b>Host</b>	Mouse
<b>Reactivity against</b>	Human
<b>Clonality</b>	Monoclonal Antibody
<b>Clone</b>	(#5A15)
<b>Isotype</b>	IgG2
<b>Purification</b>	Protein G chromatography
<b>Antigen</b>	recombinant human CCRL-2
<b>Formulation</b>	lyophilized
<b>Reconstitution buffer</b>	PBS (sterile)

**Reconstitution:** Reconstitute the antibody with 200 µl sterile PBS and the final concentration is 500 µg/ml.

**Stability:** Lyophilized samples are stable for 2 years from date of receipt when stored at -70°C. Reconstituted antibody can be aliquoted and stored frozen at < -20 °C for at least for six months without detectable loss of activity.

**Remarks:** This antibody was selected for its ability to detect both human CRAM-A and CRAM-B isoforms.

**AVOID REPEATED FREEZE AND THAW CYCLES!**

## Applications

The antibody can be used within the following applications:  
FC, IHC (P)

### Recommended usage:

**FC:** 1:20-100

IHC (Paraffin):

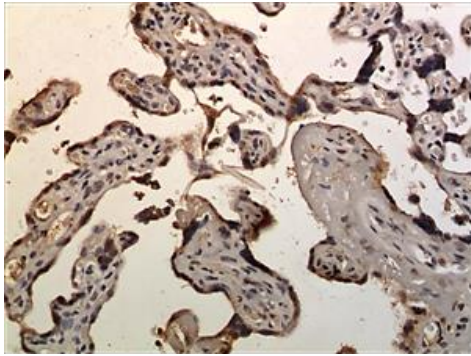
**NOTE: OPTIMAL DILUTIONS SHOULD BE DETERMINED BY EACH LABORATORY FOR EACH APPLICATION!**



## Anti-Human CCRL-2 (#5A15)

---

### Application/Handling



**Fig. 1:** A 10% Buffer formalin fixed and paraffin embedded human placental tissue section (4um) is subjected to IHC staining using a mouse anti-human CCRL-2 monoclonal antibody. Tissue section was pretreated in citric buffer (ph6.0) with microwave for antigen retrieval before IHC is applied.