



20150720BB

Anti-Human CCL-27 (#7H44)

**FOR RESEARCH ONLY! NOT FOR HUMAN USE!**

Cat.-no.:	101-M271
Size:	100 µg
Lot. No.:	According to product label

Preparation: This antibody was produced from a hybridoma (mouse myeloma fused with spleen cells from a mouse) immunized with human recombinant protein of CCL-27 (also called Cutaneous T-cell-attracting chemokine (CTACK)).

Target Background

Synonyms (Target):	CCL27; ALP; ILC; CTAK; CTACK; PESKY; ESKINE; SCYA27
---------------------------	---

CTACK or CCL-27 is a keratinocyte-derived CC chemokine which signals through the CCR10 receptor. Both CTACK and CCR10 are expressed in normal and irritated epithelial cells. CTACK selectively attracts CLA⁺ T-cells and directs them into the skin. CTACK contains the four highly conserved cysteine residues present in most CC chemokines. The mature protein contains 88 amino acid residues. Recombinant human CTACK is a 10.2 kDa protein containing 88 amino acid residues.

Database References Target

Protein RefSeq:	NP_006655
Uniprot ID:	Q9Y4X3
mRNA RefSeq:	NM_006664

Product Specifications

Host	Mouse
Reactivity against	Human
Clonality	Monoclonal Antibody
Clone	(#7H44)
Isotype	IgG1
Purification	Protein G chromatography
Antigen	recombinant human CCL-27
Formulation	lyophilized
Reconstitution buffer	PBS (sterile)

Reconstitution: Reconstitute the antibody with 200 µl sterile PBS and the final concentration is 500 µg/ml.

Stability: Lyophilized samples are stable for 2 years from date of receipt when stored at -70°C. Reconstituted antibody can be aliquoted and stored frozen at < -20 °C for at least for six months without detectable loss of activity.

Remarks: This antibody was selected for its ability to detect human CCL-27 protein.

**AVOID REPEATED FREEZE AND THAW CYCLES!**

Applications

The antibody can be used within the following applications:

WB, IHC (P), N

Recommended usage:

Western Blot: 1:500 - 1:1000

IHC (frozen): 1:20 - 1:100

Neutralization: Yes

IHC (Paraffin):

NOTE: OPTIMAL DILUTIONS SHOULD BE DETERMINED BY EACH LABORATORY FOR EACH APPLICATION!



Anti-Human CCL-27 (#7H44)

Application/Handling

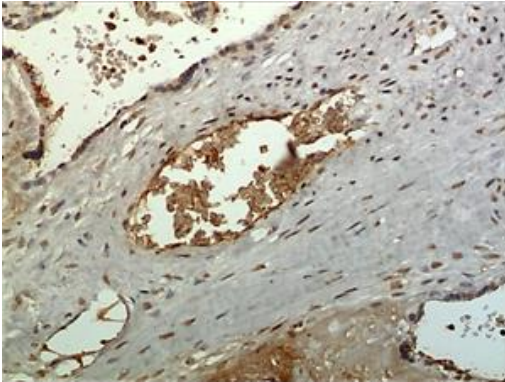


Fig. 1: A 10% Buffer formalin fixed and paraffin embedded human placental tissue section (4um) is subjected to IHC staining using a mouse anti-human CCL-27 monoclonal antibody. Tissue section was pretreated in citric buffer (ph6.0) with microwave for antigen retrieval before IHC is applied.