



20150120ML

# Anti-Human VEGF165b (#7F17)

**FOR RESEARCH ONLY! NOT FOR HUMAN USE!**

<b>Cat.-no.:</b>	<b>101-M180</b>
Size:	100 µg
Lot. No.:	According to product label

**Preparation:** This antibody was produced from a hybridoma (mouse myeloma fused with spleen cells from a mouse immunized with recombinant human VEGF-165b C-terminal peptide. IgG1 fraction of the tissue culture supernatant was purified by Protein G affinity chromatography.

## Target Background

<b>Synonyms (Target):</b>	vascular endothelial growth factor A; VEGFA; VPF; VEGF; MVCD1
---------------------------	--

VEGF165b is an mRNA splice variant of VEGF. Alternative exon usage results in a 165 aa product that is identical to VEGF165 except for 6 unique amino acids at the C-terminus. VEGF165b inhibits proliferation and migration of endothelial cells and is down-regulated in renal cell carcinomas.

## Database References Target

<b>Protein RefSeq:</b>	NP_001020421
<b>Uniprot ID:</b>	P15692-8
<b>mRNA RefSeq:</b>	NM_001171629

## Product Specifications

<b>Host</b>	Mouse
<b>Reactivity against</b>	Human
<b>Clonality</b>	Monoclonal Antibody
<b>Clone</b>	(#7F17)
<b>Isotype</b>	IgG1
<b>Purification</b>	Protein G chromatography
<b>Antigen</b>	human VEGF-165b c-terminal peptide
<b>Formulation</b>	lyophilized

**Reconstitution:** Reconstitute the antibody with 200 µl sterile PBS and the final concentration is 500 µg/ml.

**Stability:** Lyophilized samples are stable for 2 years from date of receipt when stored at -70°C. Reconstituted antibody can be aliquoted and stored frozen at < -20 °C for at least for six months without detectable loss of activity.

**Remarks:** This antibody was selected for its ability to detect human VEGF165b. The antibody showed no cross-reactivity with rh VEGF206.

**AVOID REPEATED FREEZE AND THAW CYCLES!**

## Applications

The antibody can be used within the following applications:  
WB, IHC

**Recommended usage:**

Western Blot: 1:500 - 1:1000

IHC: 1:20 - 1:100

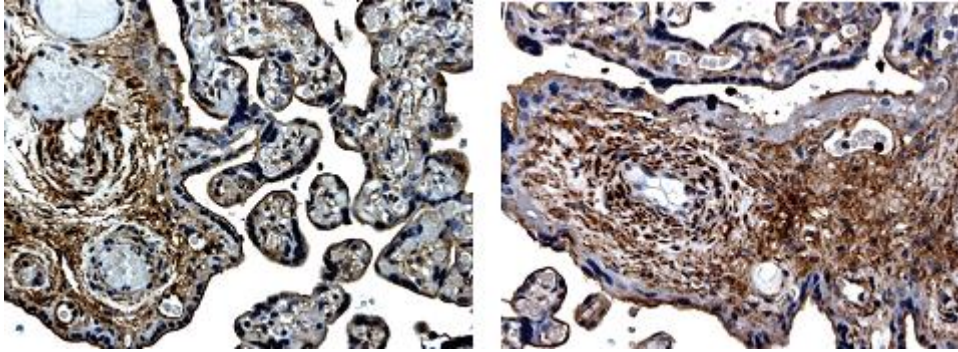
Note: Optimal Dilutions Should Be Determined By Each Laboratory for Each Application!



## **Anti-Human VEGF165b (#7F17)**

---

### **Application/Handling**



Human placenta (formalin fixed and paraffin embedded) section is subjected to IHC.