



20210224DS

# Anti-Human TIMP-1 (#4A16)

**FOR RESEARCH ONLY! NOT FOR HUMAN USE!**

<b>Cat.-no.:</b>	<b>101-M123</b>
Size:	100 µg
Lot. No.:	According to product label

**Preparation:** This antibody was produced from a hybridoma (mouse myeloma fused with spleen cells from a mouse immunized with purified recombinant human tissue inhibitor of metalloproteinases-1 (TIMP-1). The IgG fraction of the tissue culture supernatant was purified by Protein G affinity chromatography.

## Target Background

<b>Synonyms (Target):</b>	TIMP1; EPA; EPO; HCl; CLGI; TIMP
---------------------------	----------------------------------

TIMPs-1 through -4 regulate the activity of zinc metalloproteases known as MMPs, ADAMs and ADAMTSs. Structurally, TIMPs contain two domains. The N-terminal domain binds to the active site of mature metalloproteases via a 1:1 non-covalent interaction, blocking access of substrates to the catalytic site. In addition, The C-terminal domain of TIMP-1 and TIMP-2 binds to the hemopexin-like domain of pro-MMP-9 and pro-MMP-2, respectively. The latter binding is essential for the cell surface activation of MMP-2 by MMP-14.

## Database References Target

<b>Protein RefSeq:</b>	NP_003245
<b>Uniprot ID:</b>	P01033
<b>mRNA RefSeq:</b>	NM_003254

## Product Specifications

<b>Host</b>	Mouse
<b>Reactivity against</b>	Human
<b>Clonality</b>	Monoclonal Antibody
<b>Clone</b>	(#4A16)
<b>Isotype</b>	IgG2
<b>Purification</b>	Protein G chromatography
<b>Antigen</b>	human recombinant TIMP-1 protein
<b>Formulation</b>	lyophilized
<b>Reconstitution buffer</b>	PBS (sterile)

**Reconstitution:** Reconstitute the antibody with 200 µl sterile PBS and the final concentration is 500 µg/ml.

**Stability:** Lyophilized samples are stable for 2 years from date of receipt when stored at -70°C. Reconstituted antibody can be aliquoted and stored frozen at < -20 °C for at least for six months without detectable loss of activity.

**Remarks:** This antibody recognizes human TIMP-1 in western blot. No cross-reactivity to human TIMP-2 is noted.

**AVOID REPEATED FREEZE AND THAW CYCLES!**

## Applications

The antibody can be used within the following applications:

WB, IHC (P)

### Recommended usage:

**WB:** 1:100-1000

**IHC (Formalin/Paraffin):** 1:25-50

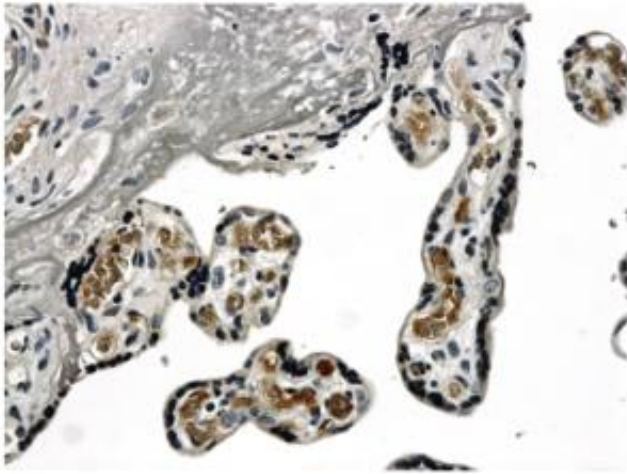
**NOTE: OPTIMAL DILUTIONS SHOULD BE DETERMINED BY EACH LABORATORY FOR EACH APPLICATION!**



## Anti-Human TIMP-1 (#4A16)

---

### Application/Handling



**Fig. 1:** Formalin fixed and paraffin embedded normal human placenta tissue is subjected to mouse anti-human TIMP-1 (#101-M123).