



## His-protein total lysate from E. coli

20170706BB



**FOR RESEARCH ONLY! NOT FOR HUMAN USE!**

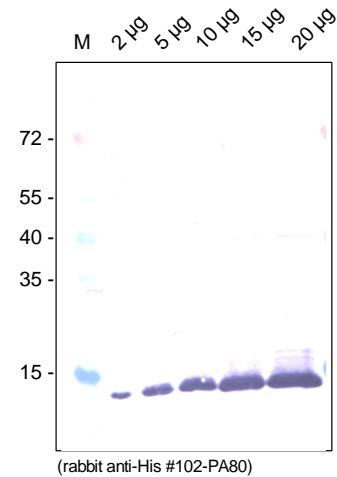
<b>Cat.-no:</b>	<b>LYS-001</b>
<b>Size:</b>	250 µg
<b>Lot. No.:</b>	According to product label
<b>Country of origin:</b>	Germany

### Product Background

The cell lysate was prepared from E.coli (Tuner [De3]) expressing a 14.2 kDa protein containing a C-terminal 6x His tag.

The total protein lysate is suggested to be used as a standard or positive control when expressing 6H-tagged proteins in E. coli. When analyzing the total protein lysate on a gel by Western blotting a prominent band of about 14.5 kDa will interact with anti-His-tag antibodies. The His-tagged protein is monomeric and will be detected under reducing and non-reducing conditions.

### Handling/Application



(rabbit anti-His #102-PA80)

**Fig. 1:** Western Blot Analysis of cell lysate prepared from E.coli (Tuner [De3]) expressing a 14.2 kDa protein containing a C-terminal 6xHis tag using our rabbit anti-His-tag antibody [Cat# 102-PA80]. As secondary antibody an AP-conjugated goat anti-rabbit antibody (Dianova) was used.

### Product Specifications

<b>Expressed in</b>	E. coli
<b>Purity</b>	Total lysate
<b>Buffer</b>	50 mM Tris-Cl, 10 mM EDTA, pH 8.0
<b>Stabilizer</b>	None
<b>Formulation</b>	lyophilized
<b>MW:</b>	14.5 kDa (in SDS-PAGE)

**Reconstitution:** Reconstitute the protein in 250 µl SDS-PAGE sample buffer (1 mg/ml protein lysate). The sample can be used direct for sample loading and then stored at -20°C. **The sample can be reused several times.**

#### Application:

To be used as standard or positive control for Western blotting of His-tagged proteins.