



Anti-bovine SRY



FOR RESEARCH ONLY! NOT FOR HUMAN USE!

Cat.-no.:	105-PA02S
Size:	100 µg
Lot. No.:	According to product label
Country of origin:	Germany

Preparation: Produced from sera of rabbits pre-immunized with highly pure recombinant bovine SRY (Met1 - Tyr229) derived from E. coli.

Target Background

Synonyms:	Sex-determining region Y protein; Testis-determining factor
------------------	---

The „Sex determining region of Y-Gen“ (SRY), known as **SRY gene**, is coding for a transkription factor (*TDF* for *Testis-determining factor*). It belongs to the protein family of DNA binding-proteins. The SRY gene is beside other genes used for the determination of the sex in human as well as other mammals. Most mammals have for this purpose a further gene, UBE1. In humans SRY is normally located on the short arm of the Y chromosome. Accordingly, people who possess this chromosome with the corresponding gene, normally have a male phenotype. It does not matter how many copies of the X chromosome are present, even people with a multiple X chromosome (Klinefelter's syndrome) have this. The protein encoded by the gene *Testis-determining factor* controls the development of male sex.

References

1. Harikae K et al, J Reprod Dev 2012; 58:654-60
2. Hamilton CK et al, Theriogenology 2012; 77:1587-96
3. Gou X et al, J Anim Breed Genet 2010; 127:154-60
4. Ross DG et al, BMC Mol Biol 2008; 9:85
5. Lu W et al, Anim Reprod Sci 2007; 100:186-91

Database References Antigen

Protein RefSeq:	NP_001014407.1
Uniprot ID:	Q03255
mRNA RefSeq:	NM_001014385.1

Product Specifications

Species reactivity	bovine
Clone/Ab feature	Rabbit IgG
Cross reactivity	ND
Host	rabbit
Clonality	polyclonal
Purification	Protein A purified
Immunogen	Recombinant bovine SRY (RT #B30-001)
Formulation	lyophilized
Buffer	PBS

Stability: The lyophilized antibody is stable at room temperature for up to 1 month. The reconstituted antibody is stable for at least two weeks at 2-8°C. Frozen aliquots are stable for at least 6 months when stored at -20°C.

Reconstitution: Centrifuge vial prior to opening. Reconstitute in sterile water to a concentration of 0.1-1.0 mg/ml.



AVOID REPEATED FREEZE AND THAW CYCLES!

Applications

Western Blot: Use 1-5 µg/ml

NOTE: OPTIMAL DILUTIONS SHOULD BE DETERMINED BY EACH LABORATORY FOR EACH APPLICATION!



Anti-bovine SRY

Handling/Applications

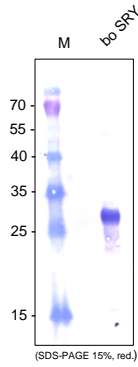


Figure 1: Western Blot Analysis using a Protein-A purified antibody against bovine SRY. Recombinant bovine SRY produced in *E. coli* was used for immunization.