



### Anti-mouse CD105/Endoglin



**FOR RESEARCH ONLY! NOT FOR HUMAN USE!**

<b>Cat.-no.:</b>	<b>103-PA60AG</b>
Size:	50 µg
Lot. No.:	According to product label
Country of origin:	Germany

**Preparation:** Produced from sera of rabbits pre-immunized with highly pure recombinant mouse soluble CD105/Endoglin (Glu26-Leu581) derived from insect cells.

### Target Background

<b>Synonyms:</b>	Cell surface MJ7/18 antigen, CD105, Endoglin
------------------	--

Endoglin, also known as CD105, is a Type I integral membrane glycoprotein with a large, disulfide-linked, extracellular region and a short, constitutively phosphorylated, cytoplasmic tail. Two splice variants of human Endoglin, the S-Endoglin and L-Endoglin that differ in the length of their cytoplasmic tails have been identified. Endoglin is highly expressed on vascular endothelial cells, chondrocytes, and syncytiotrophoblasts of term placenta. It is also found on activated monocytes, bone marrow pro-erythroblasts, and leukemic cells of lymphoid and myeloid lineages. Human and mouse Endoglin share approximately 70% and 97 % amino acid sequence identity in their extracellular and intracellular domains, respectively. Endoglin binds TGF-β1 and TGF-β3 but not TGF-β2 efficiently by associating with TGF-β type II receptor (TβRII). Endoglin has been shown to be a powerful marker of neovascularization. It is also useful as a functional marker that defines long-term repopulating hematopoietic stem cells.

### References

1. Cheifetz *et al.*, J Biol Chem 267:19027, 1992
2. Parker *et al.*, J Bone Miner Res 18:289, 2003
3. Barbara *et al.*, J Biol Chem 274:584, 1999
4. McAllister *et al.*, Nature Genet 8:345, 1994
5. Chen *et al.*, Proc Natl Acad Sci 99:15468, 2002

### Database References Antigen

<b>Protein RefSeq:</b>	NP_000109
<b>Uniprot ID:</b>	P17813
<b>mRNA RefSeq:</b>	NM_000118

### Product Specifications

<b>Species reactivity</b>	mouse
<b>Clone/Ab feature</b>	Rabbit IgG
<b>Cross reactivity</b>	ND
<b>Host</b>	rabbit
<b>Clonality</b>	polyclonal
<b>Purification</b>	Antigen affinity purified
<b>Immunogen</b>	Recombinant mouse sCD105/Endoglin (RT #S01-023)
<b>Formulation</b>	lyophilized
<b>Buffer</b>	PBS

**Stability:** The lyophilized antibody is stable at room temperature for up to 1 month. The reconstituted antibody is stable for at least two weeks at 2-8°C. Frozen aliquots are stable for at least 6 months when stored at -20°C.

**Reconstitution:** Centrifuge vial prior to opening. Reconstitute in sterile water to a concentration of 0.1-1.0 mg/ml.



**AVOID REPEATED FREEZE AND THAW CYCLES!**

### Applications

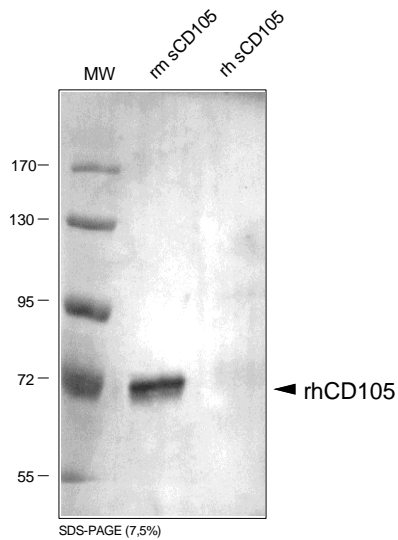
<b>ELISA:</b>	Use 1-15 µg/ml
<b>Western Blot:</b>	Use 1-5 mg/ml
<b>FACS</b>	Use at 3-20 µg/ml

**NOTE: OPTIMAL DILUTIONS SHOULD BE DETERMINED BY EACH LABORATORY FOR EACH APPLICATION!**



## Anti-mouse CD105/Endoglin

### Handling/Applications



**Fig. 1:** Western analysis with anti-mouse CD105. There is no cross reaction with human sCD105.