



Anti-mouse Endomucin

20140702BB



FOR RESEARCH ONLY! NOT FOR HUMAN USE!

Cat.-no.:	103-PA49AG
Size:	50 µg
Lot. No.:	According to product label
Country of origin:	Germany

Preparation: Produced from sera of rabbits pre-immunized with highly pure (>95%) recombinant mouse soluble Endomucin (Glu20-Ser190) derived from E. coli.

Target Background

Synonyms:	Endomucin-1/2, Mucin-14, Muc-14
------------------	---------------------------------

Endomucin (endothelial sialomucin; also Endomucin-1/2 and Mucin-14) is an 80 - 120 kDa glycoprotein member of the Endomucin family of proteins. It is expressed on endothelial cells and depending upon its glycosylation pattern, can serve as either a pro- or anti-adhesive molecule. Mouse Endomucin precursor is 261 amino acids in length. It is type I transmembrane protein that contains a 170 aa extracellular domain (ECD) (aa 21 - 190) and a 50 aa cytoplasmic region. Three splice variants exist in the ECD. One shows a deletion of aa 91 - 141, a second shows a one aa substitution for aa 91 - 129, and a third shows a one aa substitution for aa 129 - 142. Over aa 21 - 90, mouse Endomucin shares 60% and 30% aa identity with rat and human Endomucin, respectively.

References

1. Kinoshita M et al, FEBS Lett 499 (1-2): 121, 2001
2. Kuhn A et al, J Invest Dermatol 119:1388, 2002
3. Matsubara A et al, J Exp Medicine 202:1483, 2005
4. Brachtendorf G et al, Dev Dyn 222:410, 2001
5. Morgan SM et al, Blood 93:165, 1999
6. Samulowitz U et al, Am J Path 160:1669, 2002

Database References Antigen

Protein RefSeq:	NP_001156994.1
Uniprot ID:	Q9R0H2
mRNA RefSeq:	NM_001163522.1

Product Specifications

Species reactivity	mouse
Clone/Ab feature	Rabbit IgG
Cross reactivity	ND
Host	rabbit
Clonality	polyclonal
Purification	Antigen affinity purified
Immunogen	Recombinant mouse soluble Endomucin (RT #S01-M64)
Formulation	lyophilized
Buffer	PBS

Stability: The lyophilized antibody is stable at room temperature for up to 1 month. The reconstituted antibody is stable for at least two weeks at 2-8°C. Frozen aliquots are stable for at least 6 months when stored at -20°C.

Reconstitution: Centrifuge vial prior to opening. Reconstitute in sterile water to a concentration of 0.1-1.0 mg/ml.



AVOID REPEATED FREEZE AND THAW CYCLES!

Applications

Western Blot:	Use 1-5 µg/ml
IF/IHC:	Use 5µg/ml
FACS	Use 1-5 µg/ml

NOTE: OPTIMAL DILUTIONS SHOULD BE DETERMINED BY EACH LABORATORY FOR EACH APPLICATION!



Anti-mouse Endomucin

Handling/Applications

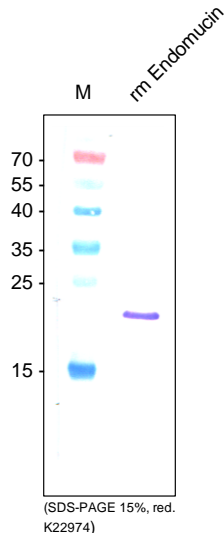


Figure 1: Western Analysis of anti-mouse Endomucin. Sample was loaded in 15% SDS-polyacrylamide gel under reducing conditions. Lane 1: MWM (kDa); lane 2: rm sEndomucin (250ng).

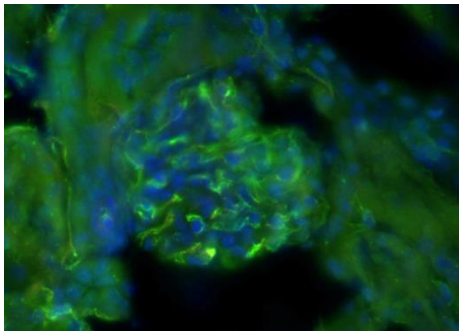


Figure 2: Immunofluorescence staining (green) of cryo-sections of adult mouse kidney (fixed 15 min in 4% PFA) with anti-mouse Endomucin (5µg/ml) [Cat# 103-PA49AG] and counter staining of nuclei with Dapi.

The experiment was performed by the research group of Prof. Dr. J. Wilting and Dr. K. Buttler, University Göttingen, Germany.

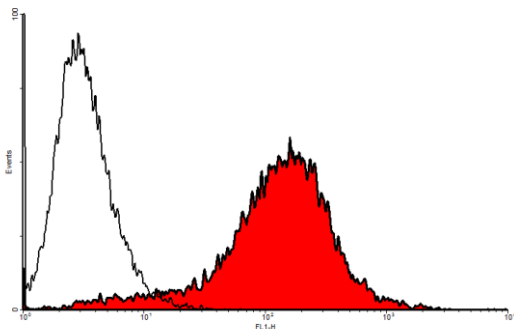


Figure 3. FACS analysis with primary mouse endothelial cells (SnoMec).