



Anti-mouse Endomucin

20140702BB



FOR RESEARCH ONLY! NOT FOR HUMAN USE!

Cat.-no.:	103-PA49
Size:	200 µg
Lot. No.:	According to product label
Country of origin:	Germany

Preparation: Produced from sera of rabbits pre-immunized with highly pure (>95%) recombinant mouse soluble Endomucin (Glu20-Ser190) derived from E. coli.

Target Background

Synonyms:	Endomucin-1/2, Mucin-14, Muc-14
------------------	---------------------------------

Endomucin (endothelial sialomucin; also Endomucin-1/2 and Mucin-14) is an 80 - 120 kDa glycoprotein member of the Endomucin family of proteins. It is expressed on endothelial cells and depending upon its glycosylation pattern, can serve as either a pro- or anti-adhesive molecule. Mouse Endomucin precursor is 261 amino acids in length. It is type I transmembrane protein that contains a 170 aa extracellular domain (ECD) (aa 21 - 190) and a 50 aa cytoplasmic region. Three splice variants exist in the ECD. One shows a deletion of aa 91 - 141, a second shows a one aa substitution for aa 91 - 129, and a third shows a one aa substitution for aa 129 - 142. Over aa 21 - 90, mouse Endomucin shares 60% and 30% aa identity with rat and human Endomucin, respectively.

References

1. Kinoshita M et al, FEBS Lett 499 (1-2): 121, 2001
2. Kuhn A et al, J Invest Dermatol 119:1388, 2002
3. Matsubara A et al, J Exp Medicine 202:1483, 2005
4. Brachtendorf G et al, Dev Dyn 222:410, 2001
5. Morgan SM et al, Blood 93:165, 1999
6. Samulowitz U et al, Am J Path 160:1669, 2002

Database References Antigen

Protein RefSeq:	NP_001156994.1
Uniprot ID:	Q9R0H2
mRNA RefSeq:	NM_001163522.1

Product Specifications

Species reactivity	mouse
Clone/Ab feature	Rabbit IgG
Cross reactivity	ND
Host	rabbit
Clonality	polyclonal
Purification	Protein A purified
Immunogen	Recombinant mouse soluble Endomucin (RT #S01-M64)
Formulation	lyophilized
Buffer	PBS

Stability: The lyophilized antibody is stable at room temperature for up to 1 month. The reconstituted antibody is stable for at least two weeks at 2-8°C. Frozen aliquots are stable for at least 6 months when stored at -20°C.

Reconstitution: Centrifuge vial prior to opening. Reconstitute in sterile water to a concentration of 0.1-1.0 mg/ml.



AVOID REPEATED FREEZE AND THAW CYCLES!

Applications

Western Blot:	Use 1-5 µg/ml
FACS:	Use 1-5 µg/ml

NOTE: OPTIMAL DILUTIONS SHOULD BE DETERMINED BY EACH LABORATORY FOR EACH APPLICATION!



Anti-mouse Endomucin

Handling/Applications

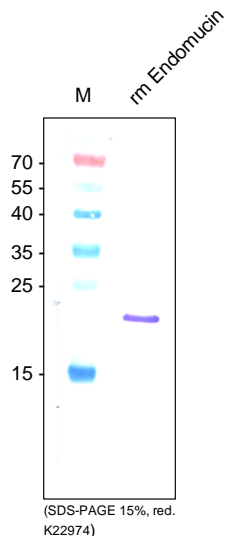


Figure 1: Western Analysis of anti-mouse Endomucin. Sample was loaded in 15% SDS-polyacrylamide gel under reducing conditions. Lane 1: MWM (kDa); lane 2: rm sEndomucin (250ng).

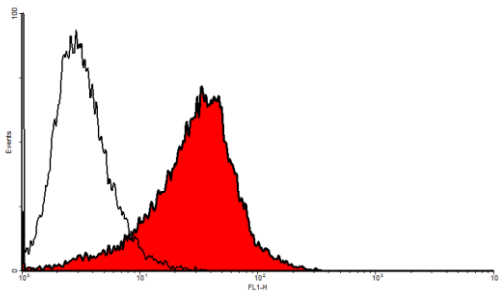


Figure 2. FACS analysis with primary mouse endothelial cells (SnoMec).