



Anti-human Endothelin-1/ET-1

20170124BB



FOR RESEARCH ONLY! NOT FOR HUMAN USE!

Cat.-no.:	102-PA35S
Size:	100 µg
Lot. No.:	According to product label
Country of origin:	Germany

Preparation: Produced from sera of rabbits immunized with highly pure (>98%) recombinant human Endothelin-1 (Ala17-Trp212) derived from E. coli.

Target Background

Synonyms:	Preproendothelin-1, PPET-1, ET-1, EDN1, QME
------------------	---

Endothelin-1 (ET-1) is a potent endogenous vasoconstrictor, mainly secreted by endothelial cells. ET-1 acts through two types of receptors: ET_A and ET_B. Apart from a vasoconstrictive action, ET-1 causes fibrosis of the vascular cells and stimulates production of reactive oxygen species. It is claimed that ET-1 induces proinflammatory mechanisms, increasing superoxide anion production and cytokine secretion. A recent study has shown that ET-1 is involved in the activation of transcription factors such as NF-kappaB and expression of proinflammatory cytokines including TNF-alpha, IL-1, and IL-6. It has been also indicated that during endotoxaemia, the plasma level of ET-1 is increased in various animal species. Some authors indicate a clear correlation between endothelin plasma level and morbidity/mortality rate in septic patients. These pathological effects of ET-1 may be abrogated at least partly by endothelin receptor blockade. ET-1 receptor antagonists may be useful for prevention of various vascular diseases. Recombinant human Endothelin-1 fused to a C terminal His-tag and derived from E. coli is a 26 kDa protein containing 204 amino-acid residues.

References

1. Itoh Y et al, FEBS Lett. 231:440 (1988) Tissue: Placenta.
2. Inoue A et al, J Biol Chem 264:14954 (1989)
3. Bloch KD et al, J Biol Chem 264:10851 (1989)
4. Benatti L et al, J Clin Invest 91:1149 (1993)
5. Inoue A et al, PNAS 86:2863 (1989)
6. Fabbrini MS et al, FEBS Lett 286:91 (1991)
7. Bourgeois C et al, J Clin Endocrinol Metab 82:3116 (1997)
8. Donlan ML et al, J Biomol NMR 2:407 (1992)
9. Gordon CT et al, Am J Hum Genet 93:1118 (2013)

Database References Antigen

Protein RefSeq:	NP_001946.3
Uniprot ID:	P05305
mRNA RefSeq:	NM_01955.4

Product Specifications

Species reactivity	human
Clone/Ab feature	Rabbit IgG
Cross reactivity	ND
Host	rabbit
Clonality	polyclonal
Purification	Protein A purified
Immunogen	Recombinant human Endothelin-1 (RT# 200-017)
Formulation	lyophilized
Buffer	PBS

Stability: The lyophilized antibody is stable at room temperature for up to 1 month. The reconstituted antibody is stable for at least two weeks at 2-8°C. Frozen aliquots are stable for at least 6 months when stored at -20°C.

Reconstitution: Centrifuge vial prior to opening. Reconstitute in sterile water to a concentration of 0.1-1.0 mg/ml.



AVOID REPEATED FREEZE AND THAW CYCLES!

Applications

Western Blot: Use 1-5 µg/ml

NOTE: OPTIMAL DILUTIONS SHOULD BE DETERMINED BY EACH LABORATORY FOR EACH APPLICATION!



Anti-human Endothelin-1/ET-1

Handling/Applications

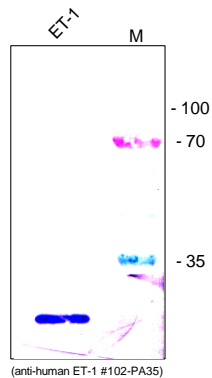


Figure 1: Western Analysis with recombinant human Endothelin-1/ET-1. Sample was loaded in 15% SDS-polyacrylamide gel under reducing conditions.