



20150116ML

Anti-Human VEGF-D (#7E79)

**FOR RESEARCH ONLY! NOT FOR HUMAN USE!**

Cat.-no.:	101-M66
Size:	100 µg
Lot. No.:	According to product label

Preparation: This antibody was produced from a hybridoma (mouse myeloma fused with spleen cells from a mouse) immunized with recombinant human VEGF-D recombinant protein. The IgG2 fraction of culture supernatant was purified by Protein G affinity chromatography.

Target Background

Synonyms (Target):	vascular endothelial growth factor D; FIGF; VEGFD; VEGF-D
---------------------------	---

VEGF-D, a member of the VEGF/PDGF family of structurally related proteins, is a potent angiogenic cytokine. It promotes endothelial cell growth, promotes lymphangiogenesis, and can also affect vascular permeability. VEGF-D is highly expressed in the lung, heart, small intestine and fetal lung, and at lower levels in the skeletal muscle, colon, and pancreas. It forms cell surfaced-associated non-covalent disulfide linked homodimers, and can bind and activate both VEGFR-2 (flk1) and VEGFR-3 (flt4) receptors. During embryogenesis, VEGF-D may play a role in the formation of the venous and lymphatic vascular systems. It also participates in the growth and maintenance of differentiated lymphatic endothelium in adults. Both VEGF-C and VEGF-D are over-expressed in certain cancers, and the resulting elevated levels of VEGF-C or VEGF-D tend to correlate with increased lymphatic metastasis.

Database References Target

Protein RefSeq:	NP_004460.1
Uniprot ID:	O43915
mRNA RefSeq:	NM_004469

Product Specifications

Host	Mouse
Reactivity against	Human
Clonality	Monoclonal Antibody
Clone	(#7E79)
Isotype	IgG2
Purification	Protein G chromatography
Antigen	recombinant human VEGF-D
Formulation	lyophilized
Reconstitution buffer	PBS (sterile)

Reconstitution: Reconstitute the antibody with 200 µl sterile PBS and the final concentration is 500 µg/ml.

Stability: Lyophilized samples are stable for 2 years from date of receipt when stored at -70°C. Reconstituted antibody can be aliquoted and stored frozen at < -20 °C for at least for six months without detectable loss of activity.

Remarks: This antibody detects human VEGF-D in Western blots. No cross-reactivity is shown with VEGF and VEGF-B.

**AVOID REPEATED FREEZE AND THAW CYCLES!**

Applications

The antibody can be used within the following applications:

WB, IHC (P)

Recommended usage:

WB: 1:500-1000

IHC (Paraffin): 1:200-500

NOTE: OPTIMAL DILUTIONS SHOULD BE DETERMINED BY EACH LABORATORY FOR EACH APPLICATION!



Anti-Human VEGF-D (#7E79)

Application/Handling

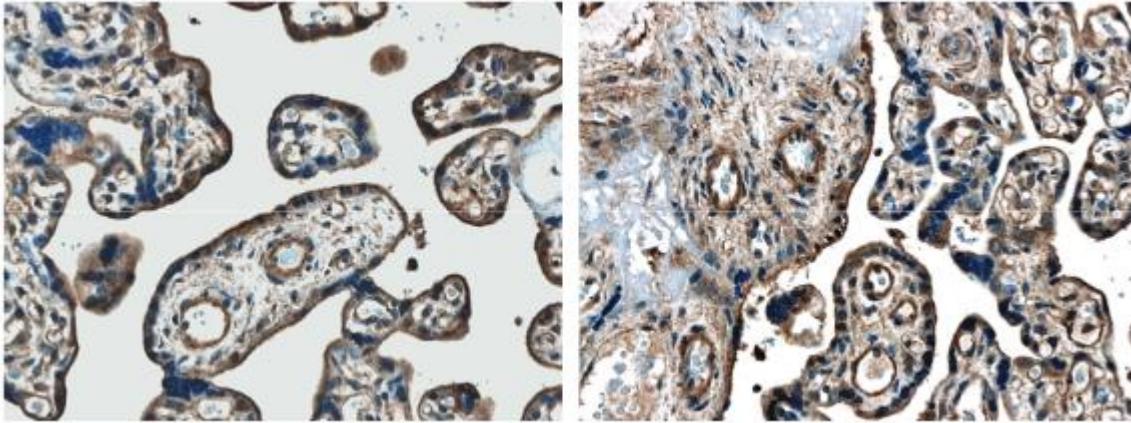


Fig. 1: Formalin fixed and Paraffin embedded human placenta tissue section was subjected to IHC staining using #101-M66 (Proteinase K pretreatment is required).