



Anti-human Megalin/gp330 (#CD7D5)

20170322BB



FOR RESEARCH ONLY! NOT FOR HUMAN USE!

Cat.-no.:	101-M144
Size:	100 µg
Lot. No.:	According to product label
Country of origin:	Germany

Preparation: Monoclonal antibodies were produced with the help of BALB/c mice using purified human Megalin as the immunizing antigen.

Target Background

Synonyms:	Low-density lipoprotein receptor-related protein 2, Glycoprotein 330, gp330
------------------	---

Megalin/gp330, an approx. 600 kDa transmembrane glycoprotein is a large cell surface receptor that mediates the binding and internalization of a number of structurally and functionally distinct ligands from the lipoprotein and protease:protease inhibitor families.

Database References Antigen

Protein RefSeq:	NP_004516.2
Uniprot ID:	P98164
mRNA RefSeq:	NM_004525.2

Product Specifications

Species reactivity	human
Clone/Ab feature	IgG ₁ ; CD7D5
Cross reactivity	rat, mouse
Host	mouse
Clonality	monoclonal
Purification	Protein G purified
Immunogen	purified human Megalin
Formulation	lyophilized
Buffer	PBS

Stability: The lyophilized antibody is stable at room temperature for up to 1 month. The reconstituted antibody is stable for at least two weeks at 2-8°C. Frozen aliquots are stable for at least 6 months when stored at -20°C.

Reconstitution: Centrifuge vial prior to opening. Reconstitute in sterile water to a concentration of 0.1-1.0 mg/ml.



AVOID REPEATED FREEZE AND THAW CYCLES!

Specificity: The antibody cross-reacts with rat and mouse Megalin.

References

1. Farquhar et al., J Am Soc Nephrol. 6:35, 1995
2. Saito et al., PNAS 93:8601, 1996
3. Hiesberger et al., JBC 271:28792, 1996
4. Orlando et al., PNAS 94:2368, 1997
5. Kerjaschki et al., J Clin Invest. 100:2303, 1997
6. Ziak et al., J Am Soc Nephrol. 10:203, 1999

Applications

IF/IHC: Use at 2-5 µg/ml

NOTE: OPTIMAL DILUTIONS SHOULD BE DETERMINED BY EACH LABORATORY FOR EACH APPLICATION!



Anti-human Megalin/gp330 (#CD7D5)

Handling/Applications

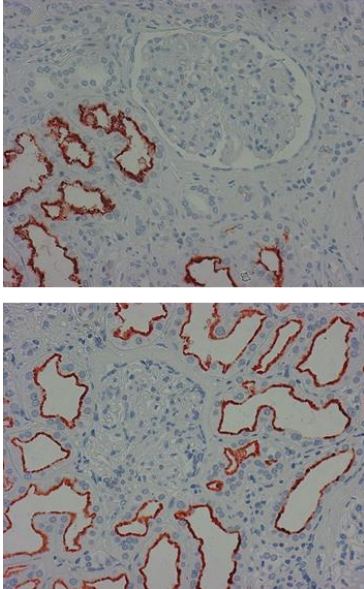


Figure 1: Staining (paraffin-embedded tissue-sections fixed in formalin) of Megalin in the brush border of the proximal tubule [Cat# 101-M144].

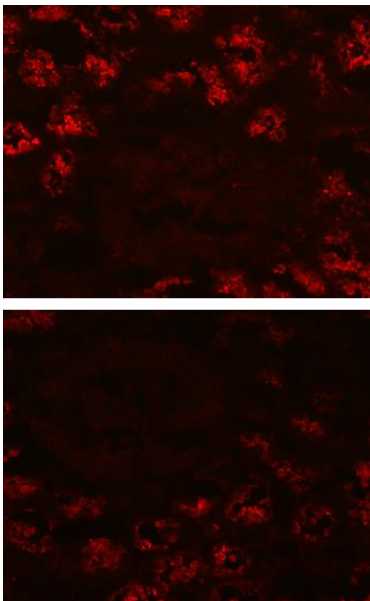


Figure 2: Immunofluorescence staining of Megalin in the brush border of the proximal tubule [Cat# 101-M144].