

*PRODUCT INFORMATION AND MANUAL*

***Human VEGF-C  
ELISA***

***BMS297  
and  
BMS297TEN***

Enzyme-linked immunosorbent assay for quantitative  
detection of human VEGF-C.

For research use only.

Not for diagnostic or therapeutic procedures.



**Human VEGF-C  
BMS297  
BMS297TEN**

Bender MedSystems GmbH  
Campus Vienna Biocenter 2  
A-1030 Vienna, Austria, Europe

## TABLE OF CONTENTS

1	Intended Use	3
2	Summary	3
3	Principles of the Test	4
4	Reagents Provided	6
5	Storage Instructions – ELISA Kit	8
6	Specimen Collection and Storage Instructions	8
7	Materials Required But Not Provided	9
8	Precautions for Use	10
9	Preparation of Reagents	12
10	Test Protocol	16
11	Calculation of Results	21
12	Limitations	24
13	Performance Characteristics	25
14	Bibliography	30
15	Ordering Information	31
16	Reagent Preparation Summary	32
17	Test Protocol Summary	33

## 1 Intended Use

The human VEGF-C ELISA is an enzyme-linked immunosorbent assay for the quantitative detection of human VEGF-C. **The human VEGF-C ELISA is for research use only. Not for diagnostic or therapeutic procedures.**

## 2 Summary

Vascular endothelial growth factor-C (VEGF-C) is a member of the VEGF family of cytokines. It has been shown to exhibit angiogenic and lymphangiogenic actions. The VEGF family of growth factors and receptors is involved in the development and growth of the vascular endothelial system. Two of its family members, VEGF-C and VEGF-D, regulate the lymphatic endothelial cells via their receptor VEGFR3, thus acting as mitogens for these cells.

VEGF-C expression is associated with hematological malignancies. Like VEGF it acts as survival factor on leukemia. Together with the expression of their receptors, VEGF and VEGF-C result in the generation of autocrine loops that may support cancer cell survival and proliferation. Further VEGF-C expression has been shown in gastrointestinal tract malignancies where it correlates with lymphatic invasion, lymphnode metastasis and reduced survival.

### 3 Principles of the Test

An anti-human VEGF-C coating antibody is adsorbed onto microwells.

Human VEGF-C present in the sample or standard binds to antibodies adsorbed to the microwells. A biotin-conjugated anti-human VEGF-C antibody is added and binds to human VEGF-C captured by the first antibody.

Following incubation unbound biotin-conjugated anti-human VEGF-C antibody is removed during a wash step. Streptavidin-HRP is added and binds to the biotin-conjugated anti-human VEGF-C antibody.

Following incubation unbound Streptavidin-HRP is removed during a wash step, and substrate solution reactive with HRP is added to the wells.

Figure 1

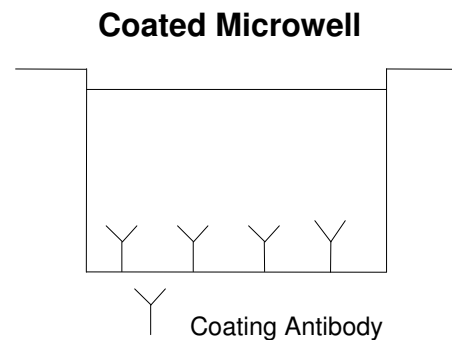


Figure 2

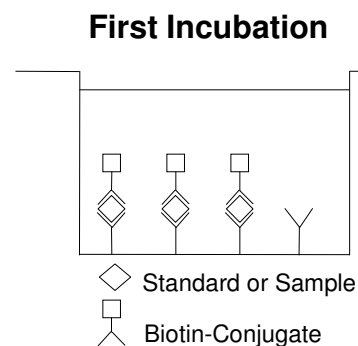


Figure 3

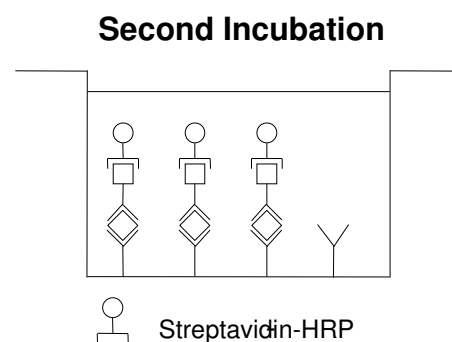
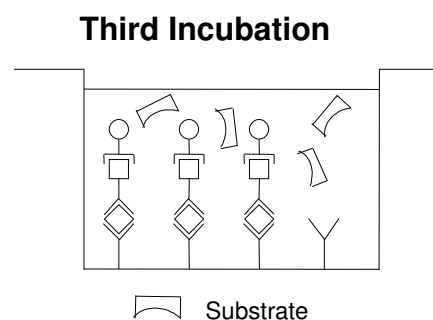
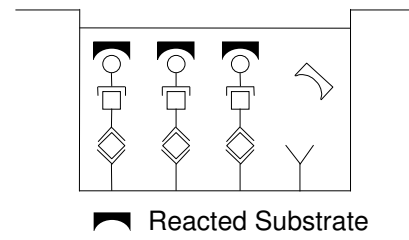


Figure 4



A coloured product is formed in proportion to the amount of human VEGF-C present in the sample or standard. The reaction is terminated by addition of acid and absorbance is measured at 450 nm. A standard curve is prepared from 7 human VEGF-C standard dilutions and human VEGF-C sample concentration determined.

Figure 5



## 4 Reagents Provided

### 4.1 Reagents for human VEGF-C ELISA BMS297 (96 tests)

- 1 aluminium pouch with a **Microwell Plate coated** with polyclonal antibody to human VEGF-C
- 1 vial (100 µl) **Biotin-Conjugate** anti-human VEGF-C polyclonal antibody
- 1 vial (150 µl) **Streptavidin-HRP**
- 2 vials human VEGF-C **Standard** lyophilized, 6000 pg/ml upon reconstitution
- 1 vial (12 ml) **Sample Diluent**
- 1 vial (20 ml) **Conjugate Diluent**
- 1 bottle (50 ml) **Wash Buffer Concentrate** 20x (PBS with 1% Tween 20)
- 1 vial (15 ml) **Substrate Solution** (tetramethyl-benzidine)
- 1 vial (12 ml) **Stop Solution** (1M Phosphoric acid)
- 1 vial (0.4 ml) **Blue-Dye**
- 1 vial (0.4 ml) **Green-Dye**
- 1 vial (0.4 ml) **Red-Dye**
- 4 **Adhesive Films**

## 4.2 Reagents for human VEGF-C ELISA BMS297TEN

(10x96 tests)

10 aluminium pouches with a **Microwell Plate coated** with polyclonal antibody to human VEGF-C

10 vials (100 µl) **Biotin-Conjugate** anti-human VEGF-C polyclonal antibody

10 vials (150 µl) **Streptavidin-HRP**

10 vials human VEGF-C **Standard** lyophilized, 6000 pg/ml upon reconstitution

10 vials (12 ml) **Sample Diluent**

10 vials (20 ml) **Conjugate Diluent**

4 bottles (50 ml) **Wash Buffer Concentrate 20x** (PBS with 1% Tween 20)

10 vials (15 ml) **Substrate Solution** (tetramethyl-benzidine)

10 vials (12 ml) **Stop Solution** (1M Phosphoric acid)

6 vials (0.4 ml) **Blue-Dye**

6 vials (0.4 ml) **Green-Dye**

6 vials (0.4 ml) **Red-Dye**

20 **Adhesive Films**

## 5 Storage Instructions – ELISA Kit

Store kit reagents between 2° and 8°C. Immediately after use remaining reagents should be returned to cold storage (2° to 8°C). Expiry of the kit and reagents is stated on labels.

Expiry of the kit components can only be guaranteed if the components are stored properly, and if, in case of repeated use of one component, this reagent is not contaminated by the first handling.

## 6 Specimen Collection and Storage Instructions

Cell culture supernatant, serum and plasma (EDTA, citrate, heparin) were tested with this assay. Other biological samples might be suitable for use in the assay. Remove serum or plasma from the clot or cells as soon as possible after clotting and separation.

Pay attention to a possible “**Hook Effect**” due to high sample concentrations (see chapter 11).

Samples containing a visible precipitate must be clarified prior to use in the assay. Do not use grossly hemolyzed or lipemic specimens.

Samples should be aliquoted and must be stored frozen at -20°C to avoid loss of bioactive human VEGF-C. Avoid repeated freeze–thaw cycles, preferentially use freshly collected samples.

If samples are to be run within 24 hours, they may be stored at 2° to 8°C (for sample stability refer to 13.5).

Prior to assay, the frozen sample should be brought to room temperature slowly and mixed gently.

Do not thaw samples in a 37°C water bath. Do not vortex or sharply agitate samples.

## **7 Materials Required But Not Provided**

- 5 ml and 10 ml graduated pipettes
- 5  $\mu$ l to 1000  $\mu$ l adjustable single channel micropipettes with disposable tips
- 50  $\mu$ l to 300  $\mu$ l adjustable multichannel micropipette with disposable tips
- Multichannel micropipette reservoir
- Beakers, flasks, cylinders necessary for preparation of reagents
- Device for delivery of wash solution (multichannel wash bottle or automatic wash system)
- Microwell strip reader capable of reading at 450 nm (620 nm as optional reference wave length)
- Glass-distilled or deionized water
- Statistical calculator with program to perform regression analysis

## 8 Precautions for Use

- All chemicals should be considered as potentially hazardous. We therefore recommend that this product is handled only by those persons who have been trained in laboratory techniques and that it is used in accordance with the principles of good laboratory practice. Wear suitable protective clothing such as laboratory overalls, safety glasses and gloves. Care should be taken to avoid contact with skin or eyes. In the case of contact with skin or eyes wash immediately with water. See material safety data sheet(s) and/or safety statement(s) for specific advice.
- Reagents are intended for research use only and are not for use in diagnostic or therapeutic procedures.
- Do not mix or substitute reagents with those from other lots or other sources.
- Do not use kit reagents beyond expiration date on label.
- Do not expose kit reagents to strong light during storage or incubation.
- Do not pipette by mouth.
- Do not eat or smoke in areas where kit reagents or samples are handled.
- Avoid contact of skin or mucous membranes with kit reagents or specimens.
- Rubber or disposable latex gloves should be worn while handling kit reagents or specimens.
- Avoid contact of substrate solution with oxidizing agents and metal.
- Avoid splashing or generation of aerosols.
- In order to avoid microbial contamination or cross-contamination of reagents or specimens which may invalidate the test use disposable pipette tips and/or pipettes.
- Use clean, dedicated reagent trays for dispensing the conjugate and substrate reagent.

- Exposure to acid inactivates the conjugate.
- Glass-distilled water or deionized water must be used for reagent preparation.
- Substrate solution must be at room temperature prior to use.
- Decontaminate and dispose specimens and all potentially contaminated materials as they could contain infectious agents. The preferred method of decontamination is autoclaving for a minimum of 1 hour at 121.5°C.
- Liquid wastes not containing acid and neutralized waste may be mixed with sodium hypochlorite in volumes such that the final mixture contains 1.0% sodium hypochlorite. Allow 30 minutes for effective decontamination. Liquid waste containing acid must be neutralized prior to the addition of sodium hypochlorite.

## 9 Preparation of Reagents

**Buffer Concentrates** should be brought to room temperature and should be diluted before starting the test procedure.

If crystals have formed in the **Buffer Concentrates**, warm them gently until they have completely dissolved.

### 9.1 Wash Buffer (1x)

Pour entire contents (50 ml) of the **Wash Buffer Concentrate** (20x) into a clean 1000 ml graduated cylinder. Bring to final volume of 1000 ml with glass-distilled or deionized water. Mix gently to avoid foaming. The pH of the final solution should adjust to 7.4.

Transfer to a clean wash bottle and store at 2° to 25°C. Please note that Wash Buffer (1x) is stable for 30 days.

Wash Buffer (1x) may also be prepared as needed according to the following table:

Number of Strips	Wash Buffer Concentrate (20x) (ml)	Distilled Water (ml)
1 - 6	25	475
1 - 12	50	950

### 9.2 Biotin-Conjugate

**Please note that the Biotin-Conjugate should be used within 30 minutes after dilution.**

Make a 1:100 dilution of the concentrated **Biotin-Conjugate** solution with Conjugate Diluent in a clean plastic tube as needed according to the following table:

Number of Strips	Biotin-Conjugate (ml)	Conjugate Diluent (ml)
1 - 6	0.03	2.97
1 - 12	0.06	5.94

### 9.3 Streptavidin-HRP

**Please note that the Streptavidin-HRP should be used within 30 minutes after dilution.**

Make a 1:400 dilution of the concentrated **Streptavidin-HRP** solution with Conjugate Diluent in a clean plastic tube as needed according to the following table:

Number of Strips	Streptavidin-HRP (ml)	Conjugate Diluent (ml)
1 - 6	0.015	5.985
1 - 12	0.030	11.970

### 9.4 Human VEGF-C Standard

Reconstitute **human VEGF-C standard** by addition of distilled water. Reconstitution volume is stated on the label of the standard vial. Swirl or mix gently to insure complete and homogeneous solubilization (concentration of reconstituted standard = 6000 pg/ml).

After usage remaining standard cannot be stored and has to be discarded.

**Standard dilutions** can be prepared directly on the microwell plate (see 10.c) or alternatively in tubes (see 9.4.1).

#### 9.4.1 External Standard Dilution

Label 7 tubes, one for each standard point.

S1, S2, S3, S4, S5, S6, S7

Then prepare 1:2 serial dilutions for the standard curve as follows:  
Pipette 225 µl of Sample Diluent into each tube.

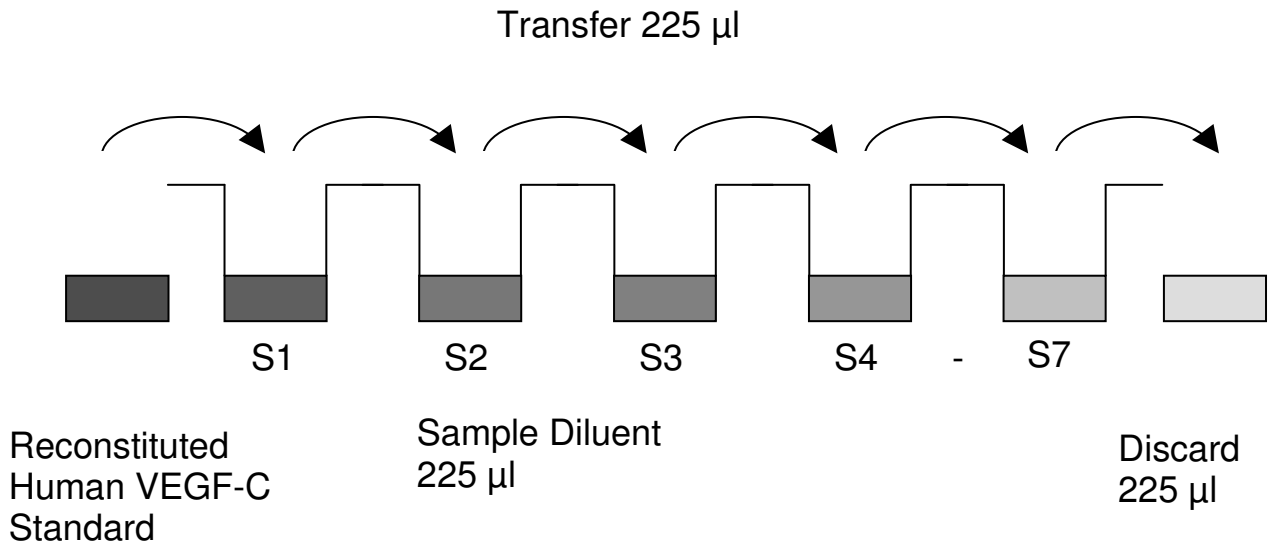
Pipette 225 µl of reconstituted standard (concentration = 6000 pg/ml) into the first tube, labelled S1, and mix (concentration of standard 1 = 3000 pg/ml).

Pipette 225  $\mu$ l of this dilution into the second tube, labelled S2, and mix thoroughly before the next transfer.

Repeat serial dilutions 5 more times thus creating the points of the standard curve (see Figure 6).

Sample Diluent serves as blank.

Figure 6



### 9.5 Addition of Colour-giving Reagents: Blue-Dye, Green-Dye, Red-Dye

In order to help our customers to avoid any mistakes in pipetting the Bender MedSystems ELISAs, Bender MedSystems offers a tool that helps to monitor the addition of even very small volumes of a solution to the reaction well by giving distinctive colours to each step of the ELISA procedure.

**This procedure is optional**, does not in any way interfere with the test results, and is designed to help the customer with the performance of the test, but can also be omitted, just following the instruction booklet.

Alternatively, the dye solutions from the stocks provided (**Blue-Dye, Green-Dye, Red-Dye**) can be added to the reagents according to the following guidelines:

- 1. Diluent:** Before standard and sample dilution add the **Blue-Dye** at a dilution of 1:250 (see table below) to the appropriate diluent (1x) according to the test protocol. After addition of **Blue-Dye**, proceed according to the instruction booklet.

5 ml Sample Diluent	20 µl <b>Blue-Dye</b>
12 ml Sample Diluent	48 µl <b>Blue-Dye</b>
50 ml Sample Diluent	200 µl <b>Blue-Dye</b>

- 2. Biotin-Conjugate:** Before dilution of the concentrated Biotin-Conjugate, add the **Green-Dye** at a dilution of 1:100 (see table below) to the Conjugate Diluent used for the final conjugate dilution. Proceed after addition of **Green-Dye** according to the instruction booklet: Preparation of Biotin-Conjugate.

3 ml Conjugate Diluent	30 µl <b>Green-Dye</b>
6 ml Conjugate Diluent	60 µl <b>Green-Dye</b>

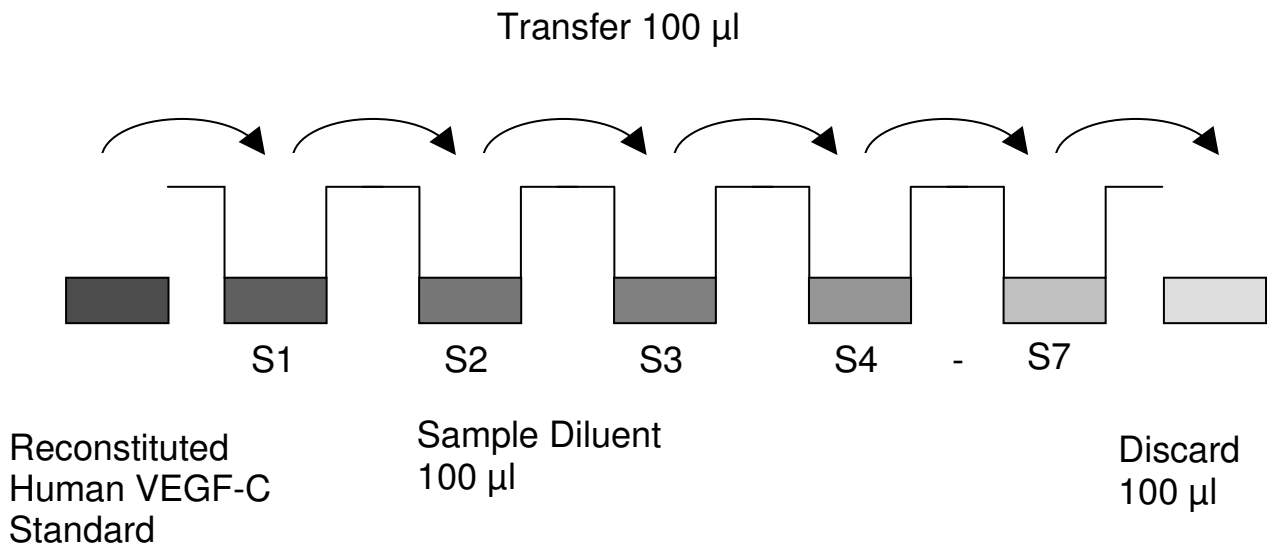
- 3. Streptavidin-HRP:** Before dilution of the concentrated Streptavidin-HRP, add the **Red-Dye** at a dilution of 1:250 (see table below) to the Conjugate Diluent used for the final Streptavidin-HRP dilution. Proceed after addition of **Red-Dye** according to the instruction booklet: Preparation of Streptavidin-HRP.

6 ml Conjugate Diluent	24 µl <b>Red-Dye</b>
12 ml Conjugate Diluent	48 µl <b>Red-Dye</b>

## 10 Test Protocol

- a. Determine the number of microwell strips required to test the desired number of samples plus appropriate number of wells needed for running blanks and standards. Each sample, standard, blank and optional control sample should be assayed in duplicate. Remove extra microwell strips from holder and store in foil bag with the desiccant provided at 2°-8°C sealed tightly.
- b. Wash the microwell strips twice with approximately 400 µl **Wash Buffer** per well with thorough aspiration of microwell contents between washes. Allow the Wash Buffer to sit in the wells for about **10 – 15 seconds** before aspiration. Take care not to scratch the surface of the microwells.  
After the last wash step, empty wells and tap microwell strips on absorbent pad or paper towel to remove excess Wash Buffer. Use the microwell strips immediately after washing. Alternatively microwell strips can be placed upside down on a wet absorbent paper for not longer than 15 minutes. **Do not allow wells to dry.**
- c. **Standard dilution on the microwell plate** (Alternatively the standard dilution can be prepared in tubes - see 9.4.1):  
Add 100 µl of Sample Diluent in duplicate to all **standard wells**. Pipette 100 µl of prepared **standard** (see Preparation of Standard 9.4, concentration = 6000 pg/ml) in duplicate into well A1 and A2 (see Table 1). Mix the contents of wells A1 and A2 by repeated aspiration and ejection (concentration of standard 1, S1 = 3000 pg/ml), and transfer 100 µl to wells B1 and B2, respectively (see Figure 7). Take care not to scratch the inner surface of the microwells. Continue this procedure 5 times, creating two rows of human VEGF-C standard dilutions ranging from 3000 to 47 pg/ml. Discard 100 µl of the contents from the last microwells (G1, G2) used.

Figure 7



In case of an **external standard dilution** (see 9.4.1), pipette 100  $\mu$ l of these standard dilutions (S1 - S7) in the standard wells according to Table 1.

Table 1

Table depicting an example of the arrangement of blanks, standards and samples in the microwell strips:

	<b>1</b>	<b>2</b>	<b>3</b>	<b>4</b>
<b>A</b>	Standard 1 (3000 pg/ml)	Standard 1 (3000 pg/ml)	Sample 1	Sample 1
<b>B</b>	Standard 2 (1500 pg/ml)	Standard 2 (1500 pg/ml)	Sample 2	Sample 2
<b>C</b>	Standard 3 (750 pg/ml)	Standard 3 (750 pg/ml)	Sample 3	Sample 3
<b>D</b>	Standard 4 (375 pg/ml)	Standard 4 (375 pg/ml)	Sample 4	Sample 4
<b>E</b>	Standard 5 (188 pg/ml)	Standard 5 (188 pg/ml)	Sample 5	Sample 5
<b>F</b>	Standard 6 (94 pg/ml)	Standard 6 (94 pg/ml)	Sample 6	Sample 6
<b>G</b>	Standard 7 (47 pg/ml)	Standard 7 (47 pg/ml)	Sample 7	Sample 7
<b>H</b>	Blank	Blank	Sample 8	Sample 8

- d. Add 100 µl of **Sample Diluent** in duplicate to the **blank wells**.
- e. Add 50 µl of **Sample Diluent** to the **sample wells**.
- f. Add 50 µl of each **sample** in duplicate to the **sample wells**.
- g. Prepare **Biotin-Conjugate** (see Preparation of Biotin-Conjugate 9.2).
- h. Add 50 µl of **Biotin-Conjugate** to all wells.
- i. Cover with an adhesive film and incubate at room temperature (18 to 25 °C) for 2 hours, if available on a microplate shaker set at 100 rpm.
- j. Prepare **Streptavidin-HRP** (refer to Preparation of Streptavidin-HRP 9.3).
- k. Remove adhesive film and empty wells. **Wash** microwell strips 3 times according to point b. of the test protocol. Proceed immediately to the next step.
- l. Add 100 µl of diluted **Streptavidin-HRP** to all wells, including the blank wells.
- m. Cover with an adhesive film and incubate at room temperature (18° to 25 °C) for 1 hour, if available on a microplate shaker set at 100 rpm.
- n. Remove adhesive film and empty wells. **Wash** microwell strips 3 times according to point b. of the test protocol. Proceed immediately to the next step.
- o. Pipette 100 µl of **TMB Substrate Solution** to all wells.
- p. Incubate the microwell strips at room temperature (18° to 25 °C) for about 10 min. Avoid direct exposure to intense light.

**The colour development on the plate should be monitored and the substrate reaction stopped (see next point of this protocol) before positive wells are no longer properly recordable. Determination of the ideal time period for colour development has to be done individually for each assay.**

It is recommended to add the stop solution when the highest standard has developed a dark blue colour. Alternatively the colour development can be monitored by the ELISA reader at 620 nm. The

substrate reaction should be stopped as soon as Standard 1 has reached an OD of 0.6 – 0.65.

- q. Stop the enzyme reaction by quickly pipetting 100  $\mu$ l of **Stop Solution** into each well. It is important that the Stop Solution is spread quickly and uniformly throughout the microwells to completely inactivate the enzyme. Results must be read immediately after the Stop Solution is added or within one hour if the microwell strips are stored at 2 - 8°C in the dark.
- r. Read absorbance of each microwell on a spectro-photometer using 450 nm as the primary wave length (optionally 620 nm as the reference wave length; 610 nm to 650 nm is acceptable). Blank the plate reader according to the manufacturer's instructions by using the blank wells. Determine the absorbance of both the samples and the standards.

**Note: In case of incubation without shaking the obtained O.D. values may be lower than indicated below. Nevertheless the results are still valid.**

## 11 Calculation of Results

- Calculate the average absorbance values for each set of duplicate standards and samples. Duplicates should be within 20 per cent of the mean value.
- Create a standard curve by plotting the mean absorbance for each standard concentration on the ordinate against the human VEGF-C concentration on the abscissa. Draw a best fit curve through the points of the graph (a 5-parameter curve fit is recommended).
- To determine the concentration of circulating human VEGF-C for each sample, first find the mean absorbance value on the ordinate and extend a horizontal line to the standard curve. At the point of intersection, extend a vertical line to the abscissa and read the corresponding human VEGF-C concentration.
- **If instructions in this protocol have been followed samples have been diluted 1:2 (50 µl sample + 50 µl Sample Diluent), the concentration read from the standard curve must be multiplied by the dilution factor (x 2).**
- **Calculation of samples with a concentration exceeding standard 1 may result in incorrect, low human VEGF-C levels (Hook Effect). Such samples require further external predilution according to expected human VEGF-C values with Sample Diluent in order to precisely quantitate the actual human VEGF-C level.**
- It is suggested that each testing facility establishes a control sample of known human VEGF-C concentration and runs this additional control with each assay. If the values obtained are not within the expected range of the control, the assay results may be invalid.
- A representative standard curve is shown in Figure 8. This curve cannot be used to derive test results. Each laboratory must prepare a standard curve for each group of microwell strips assayed.

Figure 8

Representative standard curve for human VEGF-C ELISA. Human VEGF-C was diluted in serial 2-fold steps in Sample Diluent. Do not use this standard curve to derive test results. A standard curve must be run for each group of microwell strips assayed.

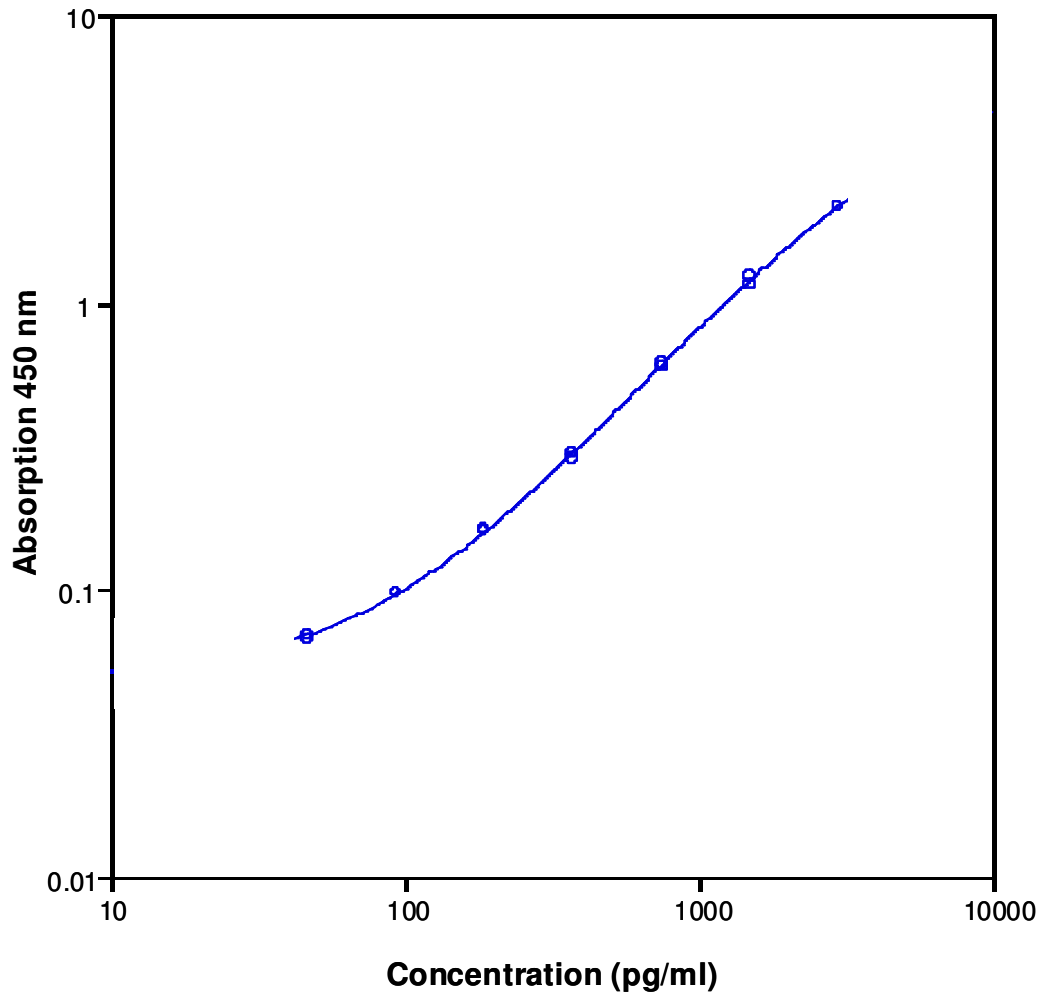


Table 2

## Typical data using the human VEGF-C ELISA

Measuring wavelength: 450 nm

Reference wavelength: 620 nm

Standard	Human VEGF-C Concentration (pg/ml)	O.D. at 450 nm	Mean O.D. at 450 nm	C.V. (%)
1	3000	2.153	2.155	0.1
	3000	2.157		
2	1500	1.141	1.187	5.5
	1500	1.233		
3	750	0.593	0.606	2.9
	750	0.618		
4	325	0.287	0.294	3.1
	325	0.300		
5	188	0.159	0.161	1.3
	188	0.162		
6	94	0.098	0.098	0.7
	94	0.097		
7	47	0.067	0.068	2.1
	47	0.069		
Blank	0	0.034	0.034	
	0	0.033		

The OD values of the standard curve may vary according to the conditions of assay performance (e.g. operator, pipetting technique, washing technique or temperature effects). Furthermore shelf life of the kit may affect enzymatic activity and thus colour intensity. Values measured are still valid.

## 12 Limitations

- Since exact conditions may vary from assay to assay, a standard curve must be established for every run.
- Bacterial or fungal contamination of either screen samples or reagents or cross-contamination between reagents may cause erroneous results.
- Disposable pipette tips, flasks or glassware are preferred, reusable glassware must be washed and thoroughly rinsed of all detergents before use.
- Improper or insufficient washing at any stage of the procedure will result in either false positive or false negative results. Empty wells completely before dispensing fresh wash solution, fill with Wash Buffer as indicated for each wash cycle and do not allow wells to sit uncovered or dry for extended periods.
- Excessive freeze–thaw cycles may result in loss of bio-active human VEGF-C. Avoid repeated freeze–thaw cycles, preferentially use freshly collected samples.

## **13 Performance Characteristics**

### **13.1 Sensitivity**

The limit of detection of human VEGF-C defined as the analyte concentration resulting in an absorbance significantly higher than that of the dilution medium (mean plus 2 standard deviations) was determined to be 13 pg/ml (mean of 6 independent assays).

### **13.2 Reproducibility**

#### **13.2.1 Intra-assay**

Reproducibility within the assay was evaluated in 2 independent experiments. Each assay was carried out with 6 replicates of 6 serum samples containing different concentrations of human VEGF-C. 2 standard curves were run on each plate. Data below show the mean human VEGF-C concentration and the coefficient of variation for each sample (see Table 3). The calculated overall intra-assay coefficient of variation was 8.8%.

Table 3

The mean human VEGF-C concentration and the coefficient of variation for each sample

Sample	Experiment	Mean Human VEGF-C Concentration (pg/ml)	Coefficient of Variation (%)
1	1	206	11
	2	204	4
2	1	153	8
	2	160	6
3	1	85	9
	2	70	9
4	1	523	8
	2	636	4
5	1	66	14
	2	76	9
6	1	93	13
	2	105	12

### 13.2.2 Inter-assay

Assay to assay reproducibility within one laboratory was evaluated in 2 independent experiments. Each assay was carried out with 6 replicates of 6 serum samples containing different concentrations of human VEGF-C. 2 standard curves were run on each plate. Data below show the mean human VEGF-C concentration and the coefficient of variation calculated on 12 determinations of each sample (see Table 4). The calculated overall inter-assay coefficient of variation was 8.4%.

Table 4

The mean human VEGF-C concentration and the coefficient of variation of each sample

Sample	Mean Human VEGF-C Concentration (pg/ml)	Coefficient of Variation (%)
1	205	0.9
2	156	3.0
3	77	13.2
4	579	13.8
5	71	10.2
6	99	9.2

### 13.3 Spike Recovery

The spike recovery was evaluated by spiking 4 levels of human VEGF-C into normal pooled human serum samples. Recoveries were determined in 3 independent experiments with 6 replicates each.

The amount of endogenous human VEGF-C in unspiked serum was subtracted from the spike values.

The recovery ranged from 79% to 108% with an overall mean recovery of 86%.

Recoveries were shown to depend on the serum used.

### 13.4 Dilution Parallelism

3 serum samples with different levels of human VEGF-C were analysed at serial 2 fold dilutions with 4 replicates each.

The recovery ranged from 72% to 118% with an overall recovery of 104% (see Table 5).

Recoveries were shown to depend on the serum used.

Table 5

Sample	Dilution	Expected Human VEGF-C Concentration (pg/ml)	Observed Human VEGF-C Concentration (pg/ml)	Recovery of Expected Human VEGF-C Concentration (%)
1	1:2	--	393	--
	1:4	197	192	98
	1:8	96	93	97
	1:16	47	34	72
2	1:2	--	3476	--
	1:4	1738	2050	118
	1:8	1025	1191	116
	1:16	595	619	104
3	1:2	--	2167	--
	1:4	1084	1169	108
	1:8	584	677	116
	1:16	339	368	109

## 13.5 Sample Stability

### 13.5.1 Freeze-Thaw Stability

Aliquots of serum samples were stored at -20 °C and thawed 5 times, and the human VEGF-C levels determined. There was no significant loss of human VEGF-C immunoreactivity detected by freezing and thawing 5 times.

Excessive freeze–thaw cycles may result in loss of bio-active human VEGF-C. Avoid repeated freeze–thaw cycles, preferentially use freshly collected samples.

### 13.5.2 Storage Stability

Aliquots of serum samples were stored at -20 °C, 2-8 °C, room temperature (RT) and at 37 °C, and the human VEGF-C level determined after 24 h. There was no significant loss of human VEGF-C immunoreactivity detected during storage under above conditions.

### 13.6 Specificity

The interference of circulating factors of the immune system was evaluated by spiking these proteins at physiologically relevant concentrations into a human VEGF-C positive serum. There was no crossreactivity detected.

### 13.7 Expected Values

Panels of 40 serum as well as plasma (EDTA, citrate, heparin) samples from randomly selected apparently healthy donors (males and females) were tested for human VEGF-C.

For detected human VEGF-C levels see Table 6.

Table 6

Sample matrix	Minimum (ng/ml)	Maximum (ng/ml)	Mean (ng/ml)	Standard Deviation (ng/ml)
Serum	n.d.	699	77	159
Plasma (EDTA)	n.d.	5805	367	1013
Plasma (Citrate)	n.d.	1899	238	453
Plasma (Heparin)	n.d.	1915	129	331

## 14 Bibliography

- 1) Clauss M. Molecular biology of the VEGF and the VEGF receptor family. *Semin Thromb Hemost.* 2000; 26 (5): 561-9.
- 2) Duff SE, Li C, Jeziorska M, Kumar S, Saunders MP, Sherlock D, O'Dwyer ST, Jayson GC. Vascular endothelial growth factors C and D and lymphangiogenesis in gastrointestinal tract malignancy. *Br J Cancer.* 2003 Aug 4; 89 (3): 426-30.
- 3) Ferrara N. Vascular endothelial growth factor and the regulation of angiogenesis. *Recent Prog Horm Res.* 2000; 55: 15-35; discussion 35-6.
- 4) Jussila L, Alitalo K. Vascular growth factors and lymphangiogenesis. *Physiol Rev.* 2002 Jul; 82 (3): 673-700.
- 5) Karkkainen MJ, Petrova TV. Vascular endothelial growth factor receptors in the regulation of angiogenesis and lymphangiogenesis. *Oncogene.* 2000 Nov. 20; 19 (49): 5598-605.
- 6) Larrivee B, Karsan A. Signaling pathways induced by vascular endothelial growth factor (review). *Int J Mol Med.* 2000 May; 5 (5): 447-56.
- 7) Olofsson B, Jeltsch M, Eriksson U, Alitalo K. Current biology of VEGF-B and VEGF-C. *Curr Opin Biotechnol.* 1999 Dec; 10 (6): 528-35.
- 8) Orpana A, Salven P. Angiogenic and lymphangiogenic molecules in hematological malignancies. *Leuk Lymphoma.* 2002 Feb; 43 (2): 219-24.
- 9) Pepper MS. Lymphangiogenesis and tumor metastasis: myth or reality? *Clin Cancer Res.* 2001 Mar; 7 (3): 462-8.

For literature update refer to **[www.bendermedsystems.com](http://www.bendermedsystems.com)**

## 15 Ordering Information

For orders please contact:

### **Europe-Headquarters**

Bender MedSystems GmbH  
Campus Vienna Biocenter 2  
A-1030 Vienna, Austria, Europe  
phone: +43 1 796 40 40 ext. 114  
fax: +43 1 796 40 40 ext. 400  
e-mail: [order@bendermedsystems.com](mailto:order@bendermedsystems.com)

### **USA**

Bender MedSystems, Inc.  
849 Hinckley Road  
Burlingame, CA 94010, USA  
toll-free phone: +1 (866) 952 2112  
toll-free fax: +1 (877) 952 2112  
phone: +1 (650) 952 2112  
fax: +1 (650) 952 2252  
e-mail: [uscustomerserv@bendermedsystems.com](mailto:uscustomerserv@bendermedsystems.com)

For technical information please contact:

e-mail: [techserv@bendermedsystems.com](mailto:techserv@bendermedsystems.com)  
**[www.bendermedsystems.com](http://www.bendermedsystems.com)**

**Cat.No. BMS297 human VEGF-C ELISA**

**Cat.No. BMS297TEN human VEGF-C ELISA**

## 16 Reagent Preparation Summary

### 16.1 Wash Buffer (1x)

Add **Wash Buffer Concentrate** 20x (50 ml) to 950 ml distilled water.

Number of Strips	Wash Buffer Concentrate (ml)	Distilled Water (ml)
1 - 6	25	475
1 - 12	50	950

### 16.2 Biotin-Conjugate

Make a 1:100 dilution of **Biotin-Conjugate** in Conjugate Diluent:

Number of Strips	Biotin-Conjugate (ml)	Conjugate Diluent (ml)
1 - 6	0.03	2.97
1 - 12	0.06	5.94

### 16.3 Streptavidin-HRP

Make a 1:400 dilution of **Streptavidin-HRP** in Conjugate Diluent:

Number of Strips	Streptavidin-HRP (ml)	Conjugate Diluent (ml)
1 - 6	0.015	5.985
1 - 12	0.030	11.970

### 16.4 Human VEGF-C Standard

Reconstitute lyophilized **human VEGF-C standard** with distilled water. (Reconstitution volume is stated on the label of the standard vial.)

## 17 Test Protocol Summary

1. Determine the number of microwell strips required.
2. Wash microwell strips twice with Wash Buffer.
3. Standard dilution on the microwell plate: Add 100 µl Sample Diluent, in duplicate, to all standard wells. Pipette 100 µl prepared standard into the first wells and create standard dilutions by transferring 100 µl from well to well. Discard 100 µl from the last wells.  
Alternatively external standard dilution in tubes (see 9.4.1): Pipette 100 µl of these standard dilutions in the microwell strips.
4. Add 100 µl Sample Diluent, in duplicate, to the blank wells.
5. Add 50 µl Sample Diluent to sample wells.
6. Add 50 µl sample in duplicate, to designated sample wells.
7. Prepare Biotin-Conjugate.
8. Add 50 µl Biotin-Conjugate to all wells.
9. Cover microwell strips and incubate 2 hours at room temperature (18° to 25°C).
10. Prepare Streptavidin-HRP.
11. Empty and wash microwell strips 3 times with Wash Buffer.
12. Add 100 µl diluted Streptavidin-HRP to all wells.
13. Cover microwell strips and incubate 1 hour at room temperature (18° to 25°C).
14. Empty and wash microwell strips 3 times with Wash Buffer.
15. Add 100 µl of TMB Substrate Solution to all wells.
16. Incubate the microwell strips for about 10 minutes at room temperature (18° to 25°C).
17. Add 100 µl Stop Solution to all wells.
18. Blank microwell reader and measure colour intensity at 450 nm.

**Note: If instructions in this protocol have been followed samples have been diluted 1:2 (50 µl sample + 50 µl Sample Diluent), the concentration read from the standard curve must be multiplied by the dilution factor (x 2).**