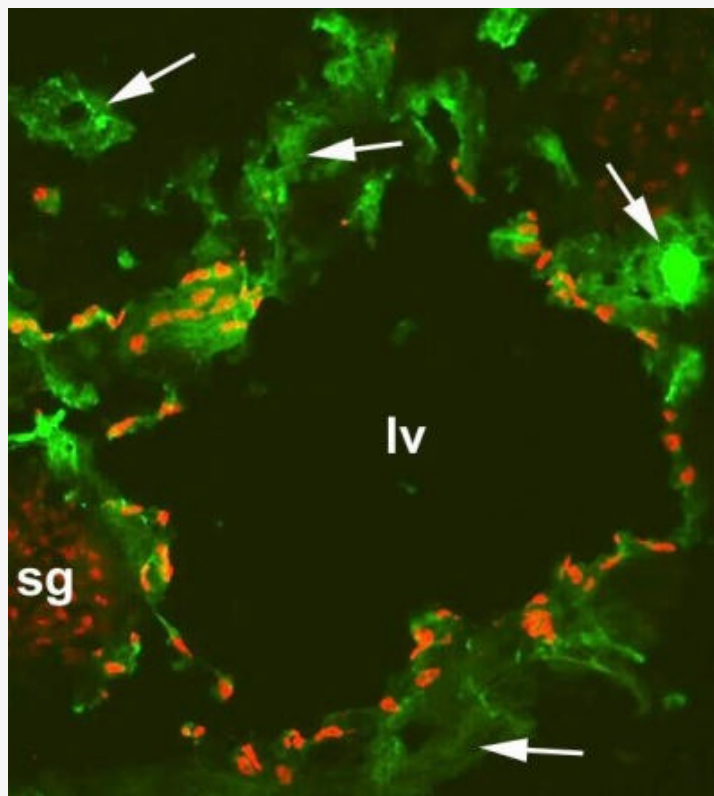


## Staining with anti-CD31 and anti-human Prox-1

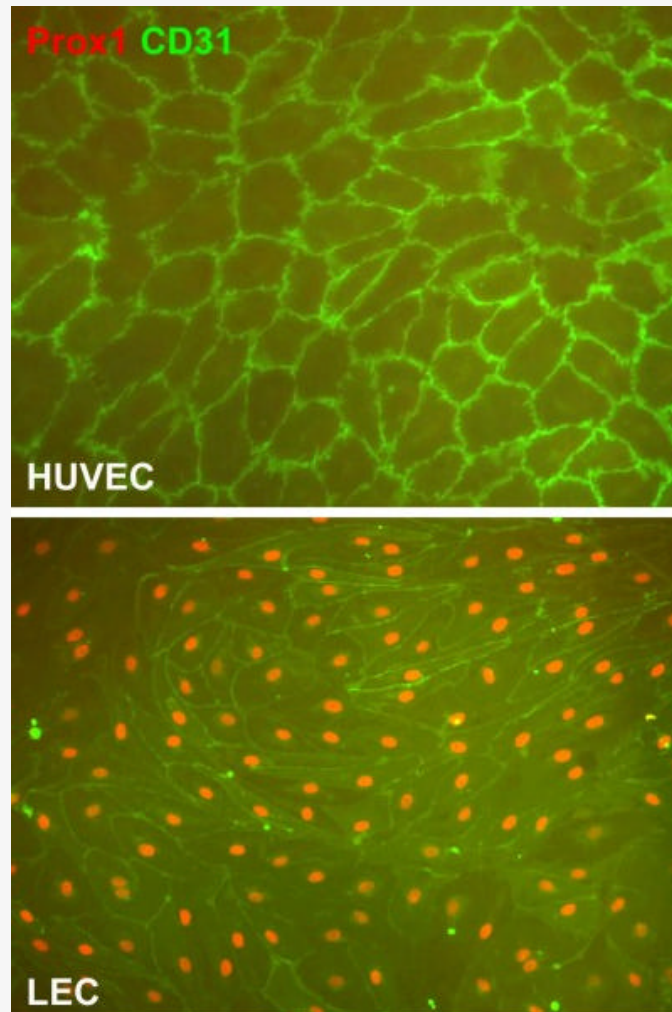
Immunofluorescence with a frozen sections of a mouse embryo at day 13.5 with anti-CD31 [green] and anti-human Prox-1 [red] (RT #102-PA30S-RT). It shows a large lymphatic vessel (lv), blood vessels (arrows) and a sympathetic ganglion (sg) which is also positiv for Prox-1 (Fig.1).



The experiment was performed by PD. Dr. Jörg Wilting, Pädiatrie I, Zentrum für Kinderheilkunde und Jugendmedizin in Göttingen, Germany.

## Staining with anti-CD31 and anti-human Prox-1

Immunofluorescence with a frozen sections of a lymphangioma with anti-CD31 [green] and anti-human Prox-1 [red] (RT #102-PA30S-RT).



The experiment was performed by PD. Dr. Jörg Wilting, Pädiatrie I, Zentrum für Kinderheilkunde und Jugendmedizin in Göttingen, Germany.