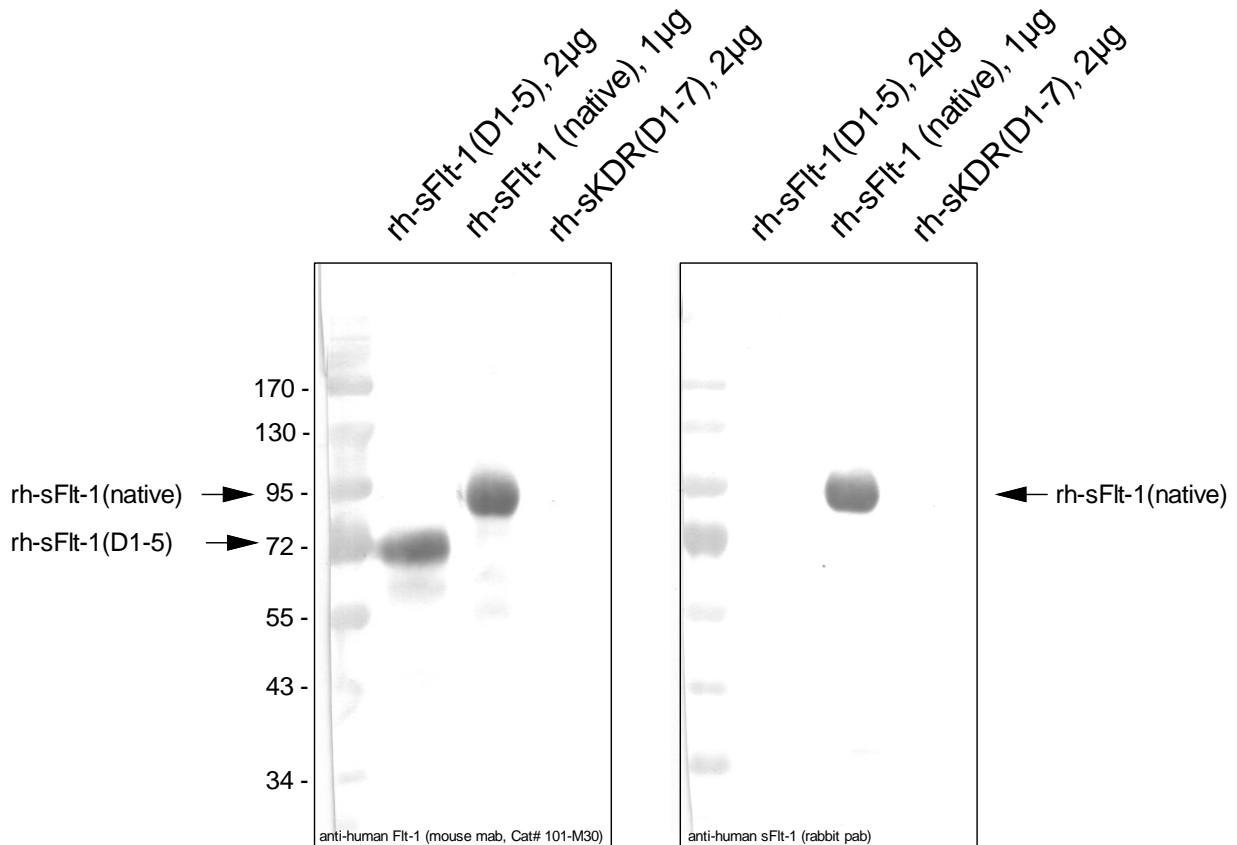


Detection of human soluble VEGFR-1/Flt-1 by a specific polyclonal antibody



The polyclonal antibody was raised against the unique C-terminal end of the native human soluble Flt-1 (*amino acids: CNKKAVFSRISKFKSTRNDSTTQSNVKH*). The Protein-A purified antibody recognizes the recombinant soluble Flt-1 (native) but not the recombinant soluble Flt-1(D1-5) both produced in insect cells. Because of the different glycosylation of insect cells compared to mammalian cells the MW of sFlt-1 (native) is about 96 kDa instead of about 110 kDa of the naturally occurring sFlt-1. The antibody did not cross react with recombinant human soluble KDR (D1-7). The monoclonal anti-human VEGFR-1/Flt-1 antibody (Cat# 101-M30) recognizes both forms.