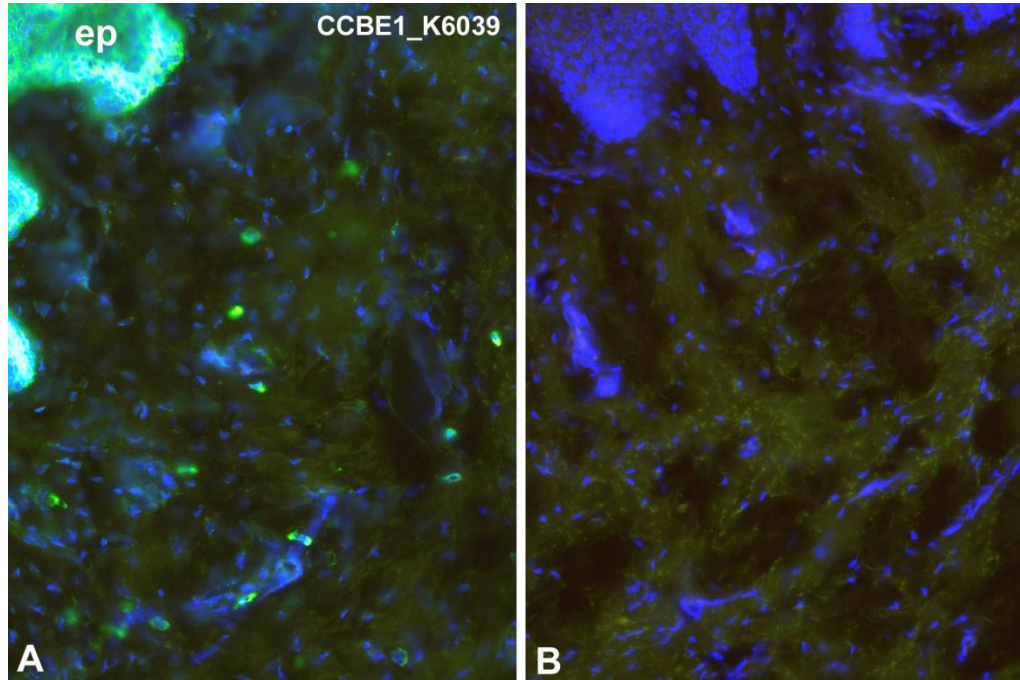


Polyclonal antibody against human ccbe1

„ Collagen and calcium-binding EGF domain-containing protein 1“



Immunofluorescence staining (green) of human foreskin (cryo-section of unfixed tissue) with anti-human ccbe1 (K6039; dilution 1:50) [Cat# 102-PA36]. A) Note specific staining in epidermis (ep) and in scattered cells in the dermis. B) Negative control of a consecutive section. Nuclei counter-stained with Dapi (blue). Specimen provided by Prof. Dr. J. Wilting, Goettingen.

The experiment was performed by the research group of Prof. Dr. J. Wilting, University Göttingen, Germany.