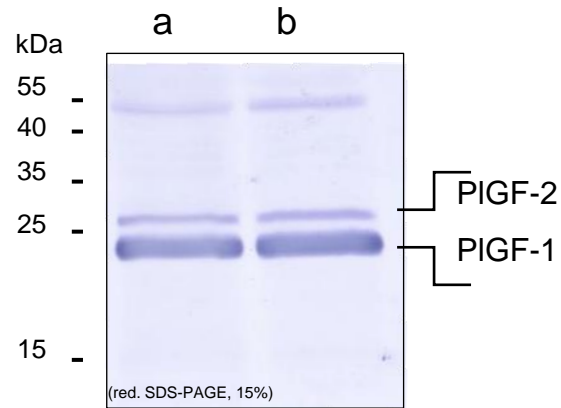


Mouse anti-human PIGF (#178/G10)

(Cat# 101-M67)



Western blot analysis: Detection of PIGF in human placenta lysates. a) patient 1; b) patient 2 (50 μ g lysat/lane). MAB 178/G10 (RT #101-M67) was used at 2 μ g/ml as first antibody. AP-conjugated goat-anti-mouse was used as a secondary antibody.