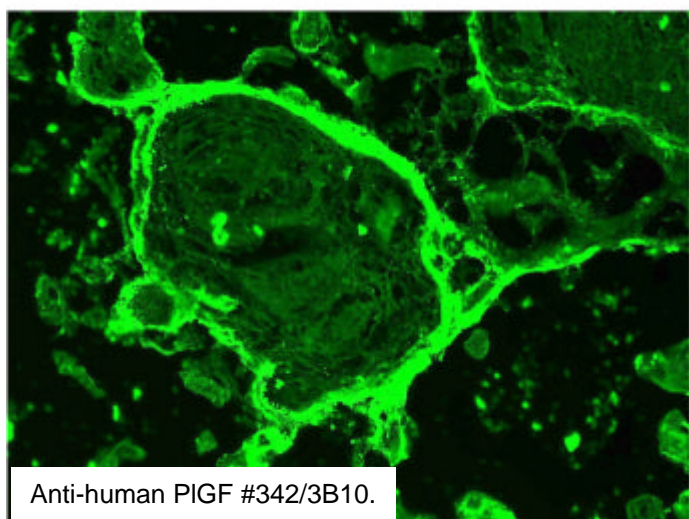
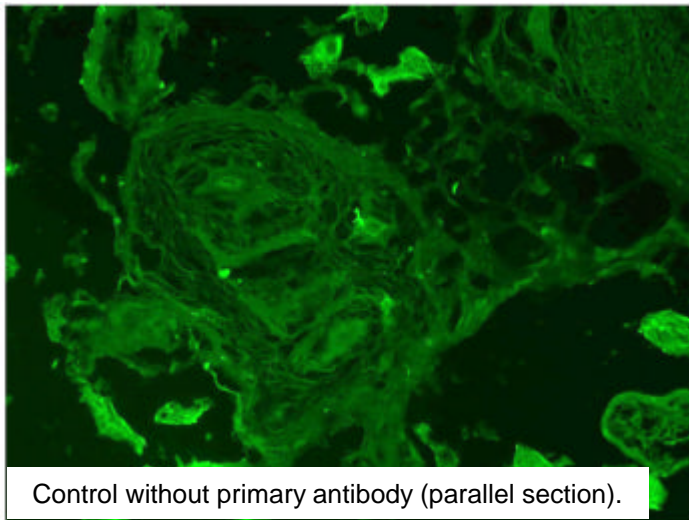


IHC with cryo-sections using RELIATech's
monoclonal anti-human PIGF antibody
clone #342/3B10

Human Placenta villous:



Note, that the syncytiotrophoblast layer is positiv for PIGF but not other fetal cells insite the trophoblast villi.

The experiment was performed by PD. Dr. Jörg Wilting, Pädiatrie I, Zentrum für Kinderheilkunde und Jugendmedizin in Göttingen, Germany.