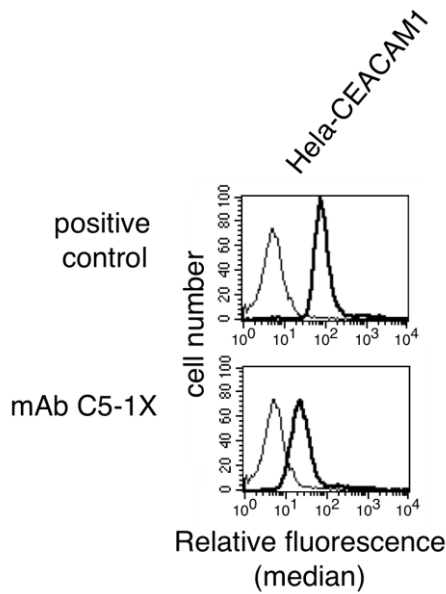


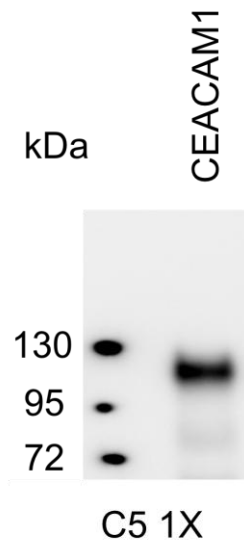
Anti-human CEACAM-1 (#C5-1X)

(Cat.# 101-M181)



Flow cytometry:

10 µg/ml of primary mAb C5-1X
250.000 HeLa-human CEACAM1 cells



Western blot analysis:

Human CEACAM-1 lysate
Detection utilising 10 µg/ml



Fluorescence microscopy:

mAb C5-1X (10 µg/ml) for staining of HT29 cells known to significantly express CEACAM1

Sandwich ELISA:

Solid phase was coated with 3 µg/ml anti CEA (Dako) binding human CEACAM1-CEACAM8. After washing, blocking and coating human CEACAM1 antigen, detecting antibody mAb C5-1X (10 µg/ml) followed by HRP-coupled goat anti-mouse Ig was added. TMB was used for visualizing the binding measured by Tecan-ELISA reader at 450 nm.

