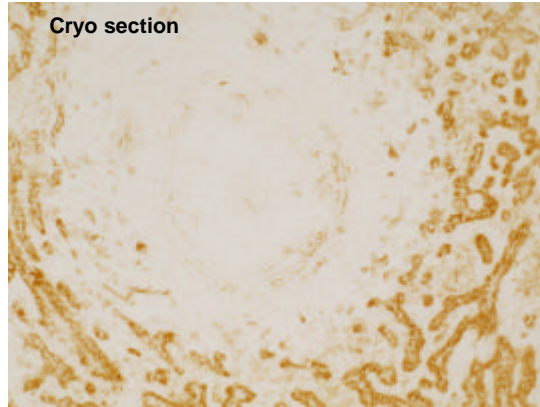
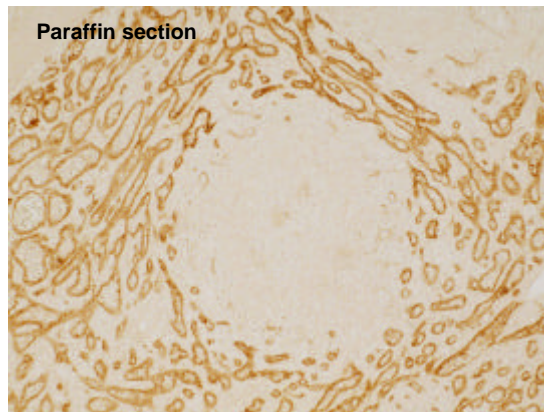


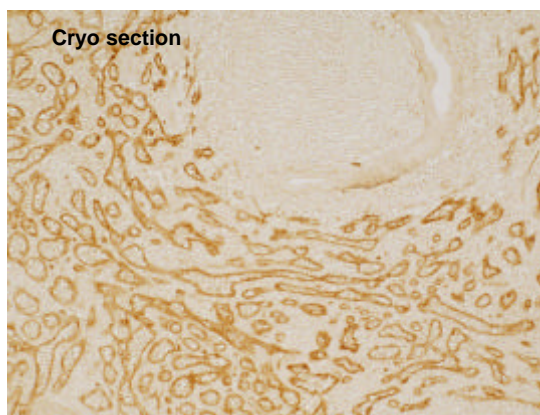
IHC with sections from human spleen using RELIATech's polyclonal anti-human LYVE-1 antibody



Anti-human LYVE-1 (RT cat# 102-PA50S)



Anti-human LYVE-1 (RT cat# 102-PA50S)



Anti-human LYVE-1 (RT cat# 102-PA50S)

The experiment was performed by Prof. Dr. Birte Steiniger, Institute of Anatomy and Cell Biology Robert-Koch-Str. 8, D-35037 Marburg, Germany